

Why NUTRITIONAL SUPPLEMENTS from the Veterinary Laboratory REVERDY?

Our obsession: Quality!
Everything we sell, we manufactured it

Ingredients

Proven effectiveness

Choice of active ingredients based on scientific studies. Our supplements are validated in our Research Centre.

Optimal doses

The level of dose which has been scientifically proven to be effective is respected.

Non doping

Choice of ingredients authorised by the FEI and the French horse-racing authorities (le Code des Courses). Absence of NOPS (naturally occurring prohibited substances).

Formulation and conception

Undertaken by our Research and Development department.

0% molasses

By-product of sugar, responsible for pathological disorders such as choke, gastric ulcers and behavioural problems.

100% of raw ingredients without GMO*

Maize and French soya bean meal without GMO*
*<0.1%

Manufacturing

Certification

GMP+

In-house production chain from A to Z

From the receipt of ingredients to the delivery of the finished product to the customer. Total and absolute control over the quality of our products.

Services

NEW Reverdy Health Department

Help and advice from our two veterinarians at the Reverdy Health Department.

Customer support

Our team in the office and on the ground are permanently at your disposal.

Fast delivery

Dispatch within 24 hours.

Technical brochure

We publish a popular scientific technical brochure*. A work of reference, it will allow you to make an informed choice. *available free on request.

2021
2022



Nutritional Supplements



Reverdy -ZA des Mesnils- 50520 Juvigny-Les-Vallées- France
00 33 (0)2 33 91 35 60 – contact@reverdy.fr



Table of contents



Which nutritional supplement to choose for my horse?

| | |
|---------------------------------------|----|
| Youngstock – up to 12 months of age | 4 |
| Youngstock – from 1 to 3 years of age | 5 |
| The Broodmare | 6 |
| The Stallion | 7 |
| The Sport horse | 8 |
| The Race horse | 10 |
| The Aged horse | 12 |



Vitamin and mineral supplements

| | |
|----------------------------|----|
| Oligovit Mineral | 14 |
| Oligovit Mineral Easy Dose | 16 |
| Racing Mineral | 18 |
| Breeding Mineral | 20 |



Breeding

| | |
|-----------|----|
| Carotene | 22 |
| Foal milk | 24 |
| Starter | 26 |



Health and Performance

| | |
|---------------------|----|
| Booster | 28 |
| Immune | 30 |
| Electrolytes Gel | 32 |
| Electrolytes Liquid | 34 |
| Electrolytes Powder | 36 |



Muscular System

| | |
|------------|----|
| Natural E | 38 |
| E Selenium | 40 |
| Myostimul | 42 |



Digestive System

| | |
|-------------|----|
| Care | 44 |
| Flora | 46 |
| Gastric Gel | 48 |
| Omega Oil | 50 |



Locomotor System

| | |
|--------------|----|
| Biotine | 52 |
| Flexy Liquid | 54 |
| Flexy Powder | 56 |
| Osteoflexy | 58 |
| Super Flexy | 60 |

Youngstock – up to 12 months of age

Throughout growth

Osteoflexy
Ensures an optimal cover of minerals, trace element and vitamin requirements. Key element in the prevention of OCD.



Youngstock – from 1 to 3 years of age

Throughout growth

Breeding Mineral - Vitamin and mineral supplements
Ensures cover of daily trace element and vitamin requirements in brood mares and growing youngsters receiving a ration deficient in calcium (traditional cereal based ration), trace elements and vitamins.



3 months

6 months

12 months

18 months

24 - 36 months



Birth

Foal Milk

Covers daily nutritional requirements of foals when the supply of maternal milk is insufficient or absent.

Starter

Covers trace element and vitamin requirements in the newborn foal.

Gastric Gel

During an episode of non-infectious and short term diarrhoea, Gastric Gel contributes to stabilising and normalising the foal's digestive tract.



Weaning

Flora

An association of probiotics and postbiotics, enhancing the intestinal flora and improving the digestibility of the ration.



First turnout to grass (Spring)

Flora

An association of probiotics and postbiotics, enhancing the intestinal flora and improving the digestibility of the ration.



Auction sales

Care

Combination of gastric acidity regulators and L-glutamine. Prevention of gastric ulcers.

Flora

An association of probiotics and postbiotics, enhancing the intestinal flora and improving the digestibility of the ration.

Myostimul

Source of essential amino-acids. Contributes to improving muscular development and protection.

Omega Oil

Blend of linseed oil and non-GMO maize germ oil. Increases the energy value of the ration.



Breaking/Pre-training

Care

Combination of gastric acidity regulators and L-glutamine. Prevention of gastric ulcers.

Flexy/Super Flexy

Combination of chondroprotective agents. Prevention of joint disorders.

Myostimul

Source of essential amino-acids. Contributes to improving muscular development and protection.

E Selenium

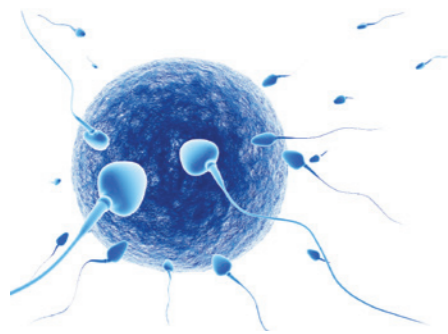
Covers daily requirements of vitamin E and selenium.

Natural E

Prevention of muscular problems, biological anti-oxidant.

Broodmare

Fertility



Carotene

Source of bêta-carotene, trace elements and vitamins. Contributes to improving fertility and colostrum quality.

Flora

An association of probiotics and postbiotics, enhancing the intestinal flora and improving the digestibility of the ration.

Omega Oil

Blend of linseed oil and non-GMO maize germ oil. Well thought out supply of Omegas 3, 6, and 9.

Natural E

A concentrate of protected natural vitamin E. Contributes to improving fertility.

Gestation



Carotene

Source of bêta-carotene, trace elements and vitamins. Contributes to improving fertility and colostrum quality.

Flora

An association of probiotics and postbiotics, helps to improve the quality of colostrum and contributes to the establishment of good quality microbiota in the foal.

Immune

Source of beta-glucans and chelated zinc, contributes to an improvement in colostrum quality.

Lactation



Flora

An association of probiotics and postbiotics, enhancing the intestinal flora and improving the digestibility of the ration.

Foal Milk

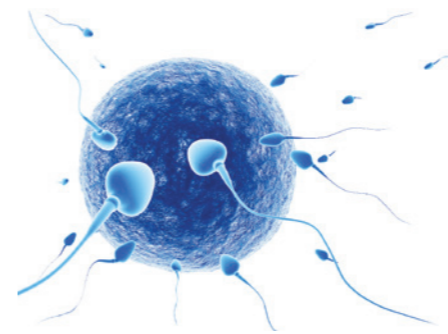
Covers daily nutritional requirements of foals when the supply of maternal milk is insufficient or absent.

Omega Oil

Blend of linseed oil and non-GMO maize germ oil. Well thought out supply of Omegas 3, 6, and 9.

Stallion

Fertility



Carotene

Source of beta-carotene, trace elements and vitamins. Contributes to improving fertility.

Omega Oil

Blend of linseed oil and non-GMO maize germ oil. Well thought out supply of Omegas 3, 6, and 9.

Natural E

A concentrate of protected natural vitamin E. Contributes to improving fertility.

Stallion health



Flexy/Super Flexy

Combination of chondroprotective agents. Prevention of, and/or, support for joint disorders.

Flora

An association of probiotics and postbiotics, enhancing the intestinal flora and improving the digestibility of the ration.

Myostimul

Source of essential amino-acids. Contributes to improving muscular development and protection.

Mares and Stallions - Vitamin and Mineral supplement



Oligovit Mineral

Covers daily requirements of trace elements and vitamins.



Breeding Mineral

Ensures cover of daily trace element and vitamin requirements in broodmares and growing youngsters receiving a ration deficient in calcium (traditional cereal based), trace elements and vitamins.

Race horse

Racing Mineral - Vitamin and Mineral Supplement

Covers daily requirements of calcium trace elements and vitamins in working horses and ponies receiving a calcium deficient diet (traditional cereal based ration).



Performance/Recovery



Booster

Source of trace elements and vitamins, contributes to recovery before and after effort.

Electrolytes

Mineral salt concentrate. Rapid reconstitution of electrolyte stocks lost through sweating.

Immune

Source of beta-glucans and chelated zinc. Contributes to strengthening immunity.

Condition/Muscles



Flora

An association of probiotics and postbiotics, enhancing the intestinal flora and improving the digestibility of the ration, contributes to improving body condition.

Myostimul

Source of essential amino-acids. Contributes to improving muscular development and protection.

Omega Oil

Blend of linseed oil and non-GMO maize germ oil. Well thought out supply of Omegas 3, 6, and 9.

Joint support



Flexy

Preventing joint disorders. An association of chondroprotective agents.

Super Flexy

Contributes to relieving joint disorders. An association of chondroprotective agents and avocado and soya oil unsaponifiable fractions.

Muscular Protection



E Selenium

Protected vitamin E and organic selenium. Prevention of muscular disorders.

Natural E

A concentrate of protected natural vitamin E. Major antioxidant, prevention of muscular disorders/problems.

Gastric support/Protection



Care

Combination of gastric acidity regulators and L-glutamine. Prevention of gastric ulcers.

Gastric Gel

An Aloe vera, aluminium phosphate, glutamine and scFOS based gastric protector. Prevention of gastric ulcers.

Sport horse

Oligovit Mineral - Vitamin and Mineral supplement
Covers daily requirements of trace elements and vitamins.



Performance/Recovery



Booster

Source of trace elements and vitamins.
Contributes to recovery before and after effort.

Electrolytes

Mineral salt concentrate.
Rapid reconstitution of electrolyte stocks lost through sweating.

Immune

Source of beta-glucans and chelated zinc.
Contributes to strengthening immunity.

Condition/Muscles



Flora

An association of probiotics and postbiotics, enhancing the intestinal flora and improving the digestibility of the ration, contributes to improving body condition.

Myostimul

Source of essential amino-acids.
Contributes to improving muscular development and protection.

Omega Oil

Blend of linseed oil and non-GMO maize germ oil. Well thought out supply of Omegas 3, 6, and 9.

Joint support



Flexy

Preventing joint disorders.
An association of chondroprotective agents.

Super Flexy

Contributes to relieving joint disorders.
An association of chondroprotective agents and avocado and soya oil unsaponifiable fractions.

Muscular Protection



E Selenium

Protected vitamin E and organic selenium.
Prevention of muscular disorders.

Natural E

A concentrate of protected natural vitamin E.
Major antioxidant, prevention of muscular disorders.

Gastric Support/Protection



Care

Combination of gastric acidity regulators and L-glutamine.
Prevention of gastric ulcers.

Gastric Gel

An Aloe vera, aluminium phosphate, glutamine and scFOS based gastric protector.
Prevention of gastric ulcers.

The Aged horse



Oligovit Mineral - Vitamin and Mineral supplement
Covers daily requirements of trace elements and vitamins.

Condition/Muscles



Flora

An association of probiotics and postbiotics, enhancing the intestinal flora and improving the digestibility of the ration, contributes to improving condition.

Myostimul

Source of essential amino-acids. Contributes to improving muscular development and protection.

Omega Oil

Blend of linseed oil and non-GMO maize germ oil. Well thought out supply of Omegas 3, 6, and 9.

Health



Immune

Source of beta-glucans and chelated zinc. Contributes to strengthening immunity.

Joint support



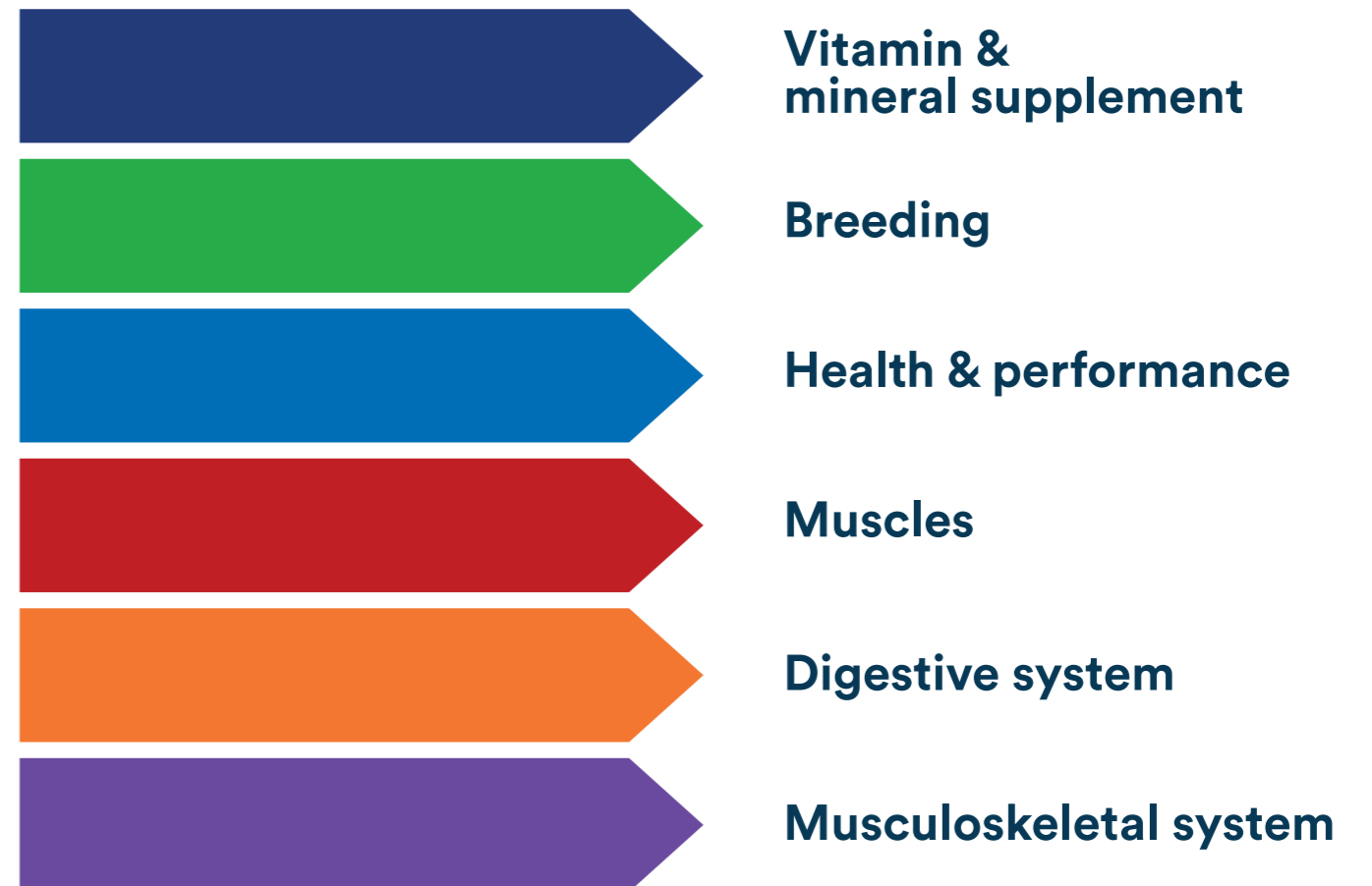
Flexy

An association of chondroprotective agents. Preventing joint disorders.

Super Flexy

An association of chondroprotective agents and avocado and soya oil unsaponifiable fractions. Contributes to relieving joint disorders.

Nutritional Supplements





OLIGOVIT MINERAL

DESCRIPTION

Vitamin and mineral supplement, supplying protected vitamins and easily assimilable trace elements.
Suitable for all horses.

INDICATIONS

Covers daily requirements in trace elements and vitamins.
For horses and ponies receiving a diet containing sufficient calcium but lacking in vitamins and trace elements:

- exclusively hay or grass diet,
- “traditional” cereal based feeds or industrial compound feeds, providing good levels of calcium but deficient in vitamins and trace elements.

DIRECTIONS FOR USE

Can be fed alone or mixed with cereals or feeds.

In the case of feeding alongside an industrial feed the amount of OLIGOVIT MINERAL to be given will depend on the quantity of industrial feed being fed and the levels of vitamins and trace elements provided by the latter.
1 measure = 30 g

| ADULT HORSE (500 KG) | RECOMMENDED DAILY DOSE |
|--------------------------|--|
| Maintenance | 1 to 2 measures (equivalent to 30 to 60 g) |
| Horse in work | 1 to 3 measures (equivalent to 30 to 90 g) |
| Growing foals | 1 to 2 measures (equivalent to 30 to 60 g) |
| Stallions and broodmares | 1 to 3 measures (equivalent to 30 to 90 g) |

For ponies, administer a daily dose in proportion to the animal's liveweight.



1.3 kg 3 kg 10 kg 20 kg



Small pellets

*Free from Naturally Occurring Prohibited Substances (NOPS) in accordance with the regulations of racing codes, FEI, FFE and SHF.



COMPOSITION

Barley, magnesium oxide, dicalcium phosphate, calcium carbonate, fructose.

ADDITIVES PER KG

Zinc (Chloride hydroxide).....6,500 mg
Copper (Chloride tri hydroxide)2,500 mg
Manganese (Oxide).....3,500 mg
Iodine (Calcium iodate)35 mg
Selenium (L-selenomethionine).....30 mg
Vitamin A.....750,000 IU
Vitamin D3.....75,000 IU
Vitamin E15,000 mg
Vitamin K3.....150 mg
Vitamin B1 (Thiamin).....700 mg
Vitamin B2 (Riboflavin)700 mg
Vitamin B3 (PP ou Niacin)1,400 mg
Vitamin B5 (Pantothenic acid).....700 mg
Vitamin B6 (Pyridoxine)400 mg
Vitamin B8 (Biotin)20 mg
Vitamin B9 (Folic acid).....550 mg
Vitamin B12 (Cyanocobalamin).....5 mg

ANALYTICAL CONSTITUENTS

Humidity.....12.5%
Total Protein.....8%
Crude Fats3.5%
Crude Fiber3.5%
Crude Ash21%
Calcium2%
Phosphorus.....1%
Magnesium3.5%
Sodium.....0.1%

1 MEASURE (30 G) OF OLIGOVIT MINERAL PROVIDES

195 mg of zinc, 75 mg of copper, 105 mg of manganese, 1.1 mg of iodine, 0.9 mg of organic selenium, 22,500 IU of vitamin A, 2,250 IU of vitamin D3, 450 mg of vitamin E, 4.5 mg of vitamin K3, 21 mg of vitamin B1, 21 mg of vitamin B2, 42 mg of vitamin B3, 21 mg of vitamin B5, 12 mg of vitamin B6, 0.6 mg of vitamin B8, 16.5 mg of vitamin B9 and 0.15 mg of vitamin B12.

CONSERVATION

Store in a dry place, away from light, at room temperature.
Shelf life : 12 months.

PROPERTIES

The vitamins and trace elements are essential for the correct functioning of the organism in foals, youngstock, adult horses at rest, in work or breeding stock.

Copper and zinc are supplied in “hydroxide” form which offers better bio-availability than the inorganic forms (sulphate, oxide, etc.). Furthermore, this particular type of supply protects the vitamins within OLIGOVIT MINERAL. As a result, these two trace elements are transported within a crystalline matrix structure that prevents them carrying out their pro-oxidant effect on the vitamins.

100% of the selenium provided is in the form of selenomethionine, the principal form under which selenium is stored in the organism. Selenium stemming from this organic source is better assimilated and stored than sodium selenite (the inorganic form).

Supplying vitamins A, D and E is indispensable to the correct functioning of the organism as they are unable to be synthesised by the body. Even if vitamins K and B can be produced by the intestinal flora, supplementation is advisable. It avoids any production failure by the flora and optimally covers daily requirements, notably in intensively worked horses, who, in addition to increased requirements, often exhibit a weakened gut flora.

PRECAUTIONS FOR USE

This product must not be distributed if a concentrate / compound feed containing good levels of vitamins and trace elements is already being fed in sufficient quantity.

If the diet is lacking in calcium, it is preferable to use BREEDING MINERAL or RACING MINERAL, depending on the age and activity of the horse.

Because of the high levels of vitamins and trace elements (including selenium) present, respect the recommendations for use.



OLIGOVIT MINERAL EASY DOSE



DESCRIPTION

Vitamin and mineral supplement, supplying protected vitamins and easily assimilable trace elements.
Suitable for all horses.

INDICATIONS

Covers daily requirements in trace elements and vitamins.
For horses and ponies receiving a diet containing sufficient calcium but lacking in vitamins and trace elements:

- exclusively hay or grass diet,
- “traditional” cereal based feeds or industrial compound feeds, providing good levels of calcium but deficient in vitamins and trace

DIRECTIONS FOR USE

Can be fed alone or mixed with cereals or feeds.
In the case of feeding alongside an industrial feed the amount of OLIGOVIT MINERAL to be given will depend on the quantity of industrial feed being fed and the levels of vitamins and trace elements provided by the latter. 30 g = 3 pieces approx., 60 g = 6 pieces

| ADULT HORSE (500 KG) | RECOMMENDED DAILY DOSE |
|--------------------------|--|
| Maintenance | 3 to 6 pieces (equivalent to 30 to 60 g) |
| Horse in work | 3 to 9 pieces (equivalent to 30 to 90 g) |
| Growing foals | 3 to 6 pieces (equivalent to 30 to 60 g) |
| Stallions and broodmares | 3 to 9 pieces (equivalent to 30 to 90 g) |

For ponies, administer a daily dose in proportion to the animal's liveweight.



1.3 kg 3 kg 10 kg 20 kg



Small pellets

*Free from Naturally Occurring Prohibited Substances (NOPS) in accordance with the regulations of racing codes, FEI, FFE and SHF.



COMPOSITION

Barley, magnesium oxide, dicalcium phosphate, calcium carbonate, fructose, green apple flavouring.

ADDITIVES PER KG

Zinc (Chloride hydroxide).....6,500 mg
Copper (Chloride tri hydroxide)2,500 mg
Manganese (Oxide).....3,500 mg
Iodine (Calcium iodate)35 mg
Selenium (L-selenomethionine).....30 mg
Vitamin A.....750,000 IU
Vitamin D3.....75,000 IU
Vitamin E15,000 mg
Vitamin K3.....150 mg
Vitamin B1 (Thiamin).....700 mg
Vitamin B2 (Riboflavin)700 mg
Vitamin B3 (PP ou Niacin)1,400 mg
Vitamin B5 (Pantothenic acid).....700 mg
Vitamin B6 (Pyridoxine)400 mg
Vitamin B8 (Biotin)20 mg
Vitamin B9 (Folic acid).....550 mg
Vitamin B12 (Cyanocobalamin).....5 mg

ANALYTICAL CONSTITUENTS

Humidity.....12.5%
Total Protein.....8%
Crude Fats3.5%
Crude Fiber3.5%
Crude Ash21%
Calcium2%
Phosphorus.....1%
Magnesium3.5%
Sodium.....0.1%

30G OF OLIGOVIT MINERAL EASY DOSE PROVIDE

195 mg of zinc, 75 mg of copper, 105 mg of manganese, 1.1 mg of iodine, 0.9 mg of organic selenium, 22,500 IU of vitamin A, 2,250 IU of vitamin D3, 450 mg of vitamin E, 4.5 mg of vitamin K3, 21 mg of vitamin B1, 21 mg of vitamin B2, 42 mg of vitamin B3, 21 mg of vitamin B5, 12 mg of vitamin B6, 0.6 mg of vitamin B8, 16.5 mg of vitamin B9 and 0.15 mg of vitamin B12.

CONSERVATION

Store in a dry place, away from light, at room temperature.
Shelf life : 12 months.

PROPERTIES

The vitamins and trace elements are essential for the correct functioning of the organism in foals, youngstock, adult horses at rest, in work or breeding stock.

Copper and zinc are supplied in “hydroxide” form which offers better bio-availability than the inorganic forms (sulphate, oxide, etc.). Furthermore, this particular type of supply protects the vitamins within OLIGOVIT MINERAL. As a result, these two trace elements are transported within a crystalline matrix structure that prevents them carrying out their pro-oxidant effect on the vitamins.

100% of the selenium provided is in the form of selenomethionine, the principal form under which selenium is stored in the organism. Selenium stemming from this organic source is better assimilated and stored than sodium selenite (the inorganic form).

Supplying vitamins A, D and E is indispensable to the correct functioning of the organism as they are unable to be synthesised by the body. Even if vitamins K and B can be produced by the intestinal flora, supplementation is advisable. It avoids any production failure by the flora and optimally covers daily requirements, notably in intensively worked horses, who, in addition to increased requirements, often exhibit a weakened gut flora.

PRECAUTIONS FOR USE

This product must not be distributed if a concentrate / compound feed containing good levels of vitamins and trace elements is already being fed in sufficient quantity.

If the diet is lacking in calcium, it is preferable to use BREEDING MINERAL or RACING MINERAL, depending on the age and activity of the horse.

Because of the high levels of vitamins and trace elements (including selenium) present, respect the recommendations for use.



RACING MINERAL

DESCRIPTION

Vitamin and mineral supplement, a source of marine calcium, protected vitamins and easily assimilable trace elements. Suited to horses in work.

INDICATIONS

Covers daily requirements in calcium, trace elements and vitamins. For working horses and ponies receiving a ration deficient in calcium, vitamins and trace elements.

DIRECTIONS FOR USE

Distribute with cereals. Mix well into the ration.
1 measuring cup = 120 g

| ADULT HORSE (500 KG) | RECOMMENDED DAILY DOSE |
|------------------------|--|
| Light to moderate work | 1/3 to 2/3 measure (equivalent to 40 to 80g) |
| Moderate to heavy work | 2/3 to 1 measure (equivalent to 80 to 120g) |

For ponies, administer a daily dose in proportion to the animal's liveweight.



4 kg 12.5 kg



Small pellets



*Free from Naturally Occurring Prohibited Substances (NOPS) in accordance with the regulations of racing codes, FEI, FFE and SHF.

COMPOSITION

Lithothamnion, maize, barley, extruded linseed, dicalcium phosphate, magnesium phosphate, extruded soya beans*, fructose.

* without GMO (< 0.1%)

ADDITIVES PER KG

| | |
|---|------------|
| Zinc (Chlorure hydroxide)..... | 3,850 mg |
| Copper (Chlorure tri hydroxide) | 1,450 mg |
| Manganese (Oxide)..... | 1,450 mg |
| Iodine (Calcium iodate) | 25 mg |
| Selenium (L-selenomethionine)..... | 25 mg |
| Vitamin A..... | 785,000 IU |
| Vitamin D3..... | 78,500 IU |
| Vitamin E..... | 26,100 IU |
| Vitamin K3..... | 96 mg |
| Vitamin B1 (Thiamin)..... | 875 mg |
| Vitamin B2 (Riboflavin) | 600 mg |
| Vitamin B3 (PP ou Niacin) | 1,750 mg |
| Vitamin B5 (Pantothenic acid)..... | 700 mg |
| Vitamin B6 (Pyridoxine) | 435 mg |
| Vitamin B8 (Biotin) | 175 mg |
| Vitamin B9 (Folic acid)..... | 190 mg |
| Vitamin B12 (Cyanocobalamin)..... | 4.5 mg |
| Vitamin C protected (Phosphorylated L-ascorbic acid)..... | 17,500 mg |

ANALYTICAL CONSTITUENTS

| | |
|--------------------|--------|
| Humidity..... | 9 % |
| Total Protein..... | 5.5 % |
| Crude Fats | 6.5 % |
| Crude Fiber | 1.5 % |
| Crude Ash | 48.5 % |
| Calcium | 15 % |
| Phosphorus..... | 2.5 % |
| Magnesium | 2.5 % |
| Sodium..... | 1 % |

1 MEASURE (120 G) OF RACING MINERAL PROVIDES

462 mg of zinc, 174 mg of copper, 174 mg of manganese, 3 mg of iodine, 3 mg of organic selenium, 94,200 IU of vitamin A, 9,420 IU of vitamin D3, 3,132 mg of vitamin E, 12 mg of vitamin K3, 105 mg of vitamin B1, 72 mg of vitamin B2, 210 mg of vitamin B3, 84 mg of vitamin B5, 52 mg of vitamin B6, 21 mg of vitamin B8, 23 mg of vitamin B9, 0.54 mg of vitamin B12 and 2,100 mg of protected vitamin C.

CONSERVATION

Store in a dry place, away from light, at room temperature.
Shelf life : 12 months.

PROPERTIES

Lithothamnion is calcareous seaweed presenting a sponge like ("honeycomb") structure. This special characteristic explains its prolonged and highly effective buffering effect in an acid environment. Its effectiveness in neutralising the acid secretions of the stomach has been validated in the horse. Likewise, calcium of marine origin is more assimilable than calcium carbonate from chalk. An increase in bone mineralisation and renewal has been demonstrated after supplementing for 112 days with lithothamnion compared to calcium carbonate from chalk.

"The supply of calcium corrects the phosphorus to calcium unbalance of "traditional" cereal and grass / hay based rations."

The vitamins and trace elements are essential for the correct functioning of the organism in foals, youngstock, adult horses at rest, in work or breeding stock.

Copper and zinc are supplied in "hydroxide" form which offers better bio-availability than the inorganic forms (sulphate, oxide, etc.). Furthermore, this particular type of supply protects the vitamins within RACING MINERAL. Indeed, these two trace elements are transported within a crystalline matrix structure, that prevents them carrying out their pro-oxidant effect on the vitamins.

100% of the selenium provided is in the form of selenomethionine, the principal form under which selenium is stored in the organism. Selenium stemming from this organic source is better assimilated and stored than sodium selenite (the inorganic form).

Supplying vitamins A, D and E is indispensable in order for the organism to function correctly as they are unable to be synthesised by the body. Even if vitamins K and B can be produced by the intestinal flora, and vitamin C by the liver, supplementing with these vitamins is advisable. It provides against any endogenous production failure and optimally covers daily requirements in working horses, who, in addition to increased requirements, often exhibit a weakened intestinal flora and liver functioning.

At a dose of approximately 20 mg a day, biotin (vitamin B8) improves the growth rate and hardness of the hoof wall.

PRECAUTIONS FOR USE

Because of the high levels of vitamins and trace elements (including selenium) present, respect the recommendations for use.



BREEDING MINERAL

DESCRIPTION

Vitamin and mineral supplement, source of calcium, protected vitamins and easily assimilable trace elements. For growing youngsters and broodmares.

INDICATIONS

Covers daily requirements in trace elements and vitamins. Broodmares and youngstock in growth receiving a ration deficient in calcium, vitamins and trace elements

DIRECTIONS FOR USE

Distribute with cereals. Mix well into the ration.
1 measure = 45 g

| ADULT HORSE (500 KG) | RECOMMENDED DAILY DOSE |
|--------------------------------------|---|
| Foals from weaning up to breaking in | 1 to 2 measures (equivalent to 45 to 90 g) |
| Broodmares | 1 to 3 measures (equivalent to 45 to 135 g) |

For ponies, administer a daily dose in proportion to the animal's liveweight.



4 kg 12.5 kg



Small pellets



*Free from Naturally Occurring Prohibited Substances (NOPS) in accordance with the regulations of racing codes, FEI, FFE and SHF.

COMPOSITION

Calcium carbonate, magnesium phosphate, corn (maize), barley, extruded linseed, dicalcium phosphate, extruded soya beans*, fructose.

* without GMO (< 0.1%)

ADDITIVES PER KG

Zinc (Chloride hydroxide) 5,000 mg
Copper (Chloride tri hydroxide) 2,000 mg
Manganese (Oxide)..... 3,000 mg
Iodine (Calcium iodate) 18.5 mg
Selenium (L-selenomethionine)..... 15 mg
Vitamin A.....450,000 IU
Vitamin D3.....65,000 IU
Vitamin E 9,000 mg
Vitamin K3..... 120 mg
Vitamin B1 (Thiamin)..... 500 mg
Vitamin B2 (Riboflavin) 500 mg
Vitamin B3 (PP ou Niacin) 1,000 mg
Vitamin B5 (Pantothenic acid)..... 500 mg
Vitamin B6 (Pyridoxine) 300 mg
Vitamin B8 (Biotin) 15 mg
Vitamin B9 (Folic acid)..... 400 mg
Vitamin B12 (Cyanocobalamin)..... 4 mg

ANALYTICAL CONSTITUENTS

Humidity 9%
Total Protein 5%
Crude Fats 4.5%
Crude Fiber 1.5%
Crude Ash 60%
Calcium 18%
Phosphorus..... 3%
Magnesium 3.5%
Sodium 0.1%

1 MEASURE (45 G) OF BREEDING MINERAL PROVIDES

225 mg of zinc, 90 mg of copper, 135 mg of manganese, 0.8 mg of iodine, 0.7 mg of organic selenium, 20,250 IU of vitamin A, 2,925 IU of vitamin D3, 405 mg of vitamin E, 5.4 mg of vitamin K3, 22.5 mg of vitamin B1, 22.5 mg of vitamin B2, 45 mg of vitamin B3, 22.5 mg of vitamin B5, 13.5 mg of vitamin B6, 0.7 mg of vitamin B8, 18 mg of vitamin B9 and 0.2 mg of vitamin B12.

CONSERVATION

Store in a dry place, away from light, at room temperature. Shelf life : 12 months.

PROPERTIES

The supply of calcium corrects the phosphorus to calcium unbalance of "traditional" cereal and grass / hay based rations.

The vitamins and trace elements are essential for the correct functioning of the organism in foals, youngstock, adult horses at rest, in work or breeding stock.

Copper and zinc are supplied in "hydroxide" form which offers better bio-availability than the inorganic forms (sulphate, oxide, etc.). Furthermore, this particular type of supply protects the vitamins within BREEDING MINERAL. As a result, these two trace elements are transported within a crystalline matrix structure, that prevents them carrying out their pro-oxidant effect on the vitamins.

100% of the selenium provided is in the form of selenomethionine, the principal form under which selenium is stored in the organism. Selenium stemming from this organic source is better assimilated and stored than sodium selenite (the inorganic form).

Supplying vitamins A, D and E is indispensable to the correct functioning of the organism as they are unable to be synthesised by the body. Even if vitamins K and B can be produced by the intestinal flora, supplementation is advisable. It avoids any production failure by the flora and optimally covers daily requirements, notably in intensively worked horses, who, in addition to increased requirements, often exhibit a weakened flora.

PRECAUTIONS FOR USE

This product must not be given in addition to the feeding of a sufficient quantity of a concentrate / compound feed containing good amounts of calcium, vitamins and trace elements.

If the ration contains alfalfa (lucerne) (in the form of forage or dehydrated pellets) or any other source of high levels of calcium, it is preferable to use OLIGOVIT MINERAL.

Because of the high levels of vitamins and trace elements (including selenium) present, respect the recommendations for use.

Breeding



CAROTENE

DESCRIPTION

A source of beta-carotene, protected vitamins and chelated trace elements. Contributes to the improvement of fertility in breeding stock and colostrum quality in broodmares.

INDICATIONS

Covers daily requirements in beta-carotene, vitamins A, E and B3, zinc, copper, manganese, selenium and iodine.

REVERDY CAROTENE can be used at higher doses in the following situations:

- Fertility disorders in mares and stallions.
- Last third of the gestation period (improvement in colostrum quality).

DIRECTIONS FOR USE

Distribute with cereals or pelleted feed. Mix well into the ration.

1 measuring cup = 90 g

| ADULT HORSE (500 KG) | DAILY DOSE |
|--------------------------|---|
| Maintenance dose | ½ measuring cup (45 g) equivalent to 9 g /100 kg (liveweight) |
| Maximum recommended dose | 1 ½ measuring cups (135 g) equivalent to 27 g /100 kg (liveweight) |

In breeding stock (mares and stallions), we advise starting REVERDY CAROTENE at least 6 to 8 weeks before the first service.

For ponies, administer a daily dose in proportion to the animal's liveweight.



3 kg

10 kg



Small pellets

*Free from Naturally Occurring Prohibited Substances (NOPS) in accordance with the regulations of racing codes, FEI, FFE and SHF.



COMPOSITION

Barley, extruded linseed, calcium carbonate.

ADDITIVES PER KG

Zinc (Hydrated amino acids chelate) 7,200 mg
 Copper (Hydrated amino acids chelate) 1,500 mg
 Manganese (Amino acids chelate)..... 3,000 mg
 Iodine (Calcium iodate) 20 mg
 Selenium (L-selenomethionine)..... 15 mg
 Beta-carotene 10,000 mg
 Vitamin A 1,000,000 IU
 Vitamin E 15,000 mg
 Vitamin B3 (PP or Niacin) 2,150 mg

ANALYTICAL CONSTITUENTS

Humidity 10%
 Total protein 15%
 Fats and oils 4.5%
 Crude fiber 4.5%
 Ash 9%
 Calcium 0.45%
 Phosphorus 0.25%
 Sodium 0.1%

1 MEASURING CUP (90 G) OF CAROTENE PROVIDES

900 mg of beta-carotene, 90,000 IU of vitamin A, 1,350 mg of vitamin E, 194 mg of vitamin B3, 648 mg of chelated* zinc, 270 mg of chelated* manganese and 135 mg of chelated* copper, 1.4 mg of organic selenium and 1.8 mg of iodine.

* Amino acids chelate

PRECAUTIONS FOR USE

Because of the high levels of vitamins and trace elements (including selenium) present, respect the recommendations for use.

CONSERVATION

Store in a dry place, away from light, at room temperature.
 Shelf life : 18 months.

PROPERTIES

Beta-carotene could improve mare fertility:

- as a precursor of vitamin A in the follicles, it participates in the synthesis of oestrogens and is thus favourable to good follicular growth,
- as local antioxidant, it protects cells in the reproductive system from attack by free radicals,
- following ovulation, it assures the correct functioning of the corpus luteum within which it takes part in the synthesis of progesterone. It contributes in this way to maintaining gestation.

Amongst the effects observed when supplementing with beta-carotene we can note more visible heats, a reduction in the number of ovarian cysts, an improved fertility level, a reduction in embryo mortality as well as a drop in the number of retained placentas.

In the stallion, beta-carotene participates (as a precursor of vitamin A) in the synthesis of testosterone. It assures correct production and maturity of spermatozoa. Thanks to its' antioxidant action, it helps protect spermatozoa from attack by free radicals.

Vitamin A affects protein synthesis with consequences on epithelium integrity in the reproductive system, the production of sexual hormones and immunity.

Vitamin E and organic selenium reinforce the antioxidant action of beta-carotene. Furthermore, supplementing with them allows an increase in colostrum antibody concentrations (IgG and IgM) as well as the quantity of colostrum produced, thus leading to a better transfer of immunity from the mare to the foal.

Zinc can play a part in reproduction as an essential activator of sexual hormone production enzymes, and also in its' function of transporting vitamin A.

Supplementing with copper would seem to improve the liberation of sexual hormones (FSH and LH) at a cerebral level (pituitary).

Manganese and vitamin B3 intervene in the production of sexual hormones.

Iodine is essential for synthesising thyroid hormones that stimulate FSH and LH production by the pituitary gland.

Breeding



FOAL MILK

DESCRIPTION

Replacement milk, very close in composition to mares' milk, enriched in high nutritional value milk serum proteins, vitamins, and trace elements. Formulated using milk products of "human food" quality only. Does not contain palm or copra oils.

INDICATIONS

Orphan foals.
Foals whose dams have insufficient milk production.

DIRECTIONS FOR USE

1 measure = 30 g. Use 120 g (4 measures) of REVERDY FOAL MILK per litre of very hot water. Mix vigorously with a whisk in order to obtain a homogeneous mixture. Leave to cool and feed the milk using a bottle, bowl or bucket with a teat. These recommendations are for a foal who will reach 500 kg at maturity:

| AGE (IN DAYS) | QUANTITY OF RECONSTITUED MILK (L / FOAL / DAY) | NUMBER OF RECOMMENDED MEALS (PER DAY) |
|---------------|--|---------------------------------------|
| 1 | Colostrum +4 - 5 | 12 - 24 |
| 5 | 7 - 8 | 10 - 12 |
| 10 | 10 - 11 | 8 - 10 |
| 15 | 11 - 12 | 6 - 8 |
| 30 | 12 - 13 | 4 - 6 |
| 45 | 13 - 14 | 4 - 6 |
| 60 | 14 - 15 | 4 - 6 |
| 75 | 14 - 15 | 3 - 4 |
| 90 | 14 - 15 | 3 - 4 |
| 110 | 12 - 13 | 2 - 3 |

Simultaneously, from the age of 15 days, we advise introducing the concentrate feed REVERDY FOAL. Weaning then can take place around 4 to 5 months old providing that the foal is eating sufficient REVERDY FOAL (2L, equivalent to 1.4kg a day).

For ponies, administer a daily dose in proportion to the animal's liveweight.



10 kg



Powder



COMPOSITION

Full fat milk powder, lactose, milk serum proteins, magnesium sulphate, sodium bicarbonate, vanilla flavouring, natural tocopherols.

ADDITIVES PER KG

| | |
|------------------------------------|-----------|
| Zinc (Sulphate)..... | 60 mg |
| Copper (Sulphate)..... | 20 mg |
| Iron (Sulphate)..... | 40 mg |
| Manganese (Sulphate)..... | 60 mg |
| Iodine (Calcium iodate) | 0.5 mg |
| Selenium (Sodium selenite)..... | 0.3 mg |
| Vitamin A..... | 20,000 IU |
| Vitamin D3..... | 2,500 IU |
| Vitamin E | 300 mg |
| Vitamin K3..... | 3 mg |
| Vitamin B1 (Thiamin)..... | 20 mg |
| Vitamin B2 (Riboflavin) | 25 mg |
| Vitamin B3 (PP or Niacin) | 40 mg |
| Vitamin B5 (Pantothenic acid)..... | 20 mg |
| Vitamin B6 (Pyridoxine) | 15 mg |
| Vitamin B8 (Biotin) | 0.5 mg |
| Vitamin B9 (Folic acid)..... | 15 mg |
| Vitamin B12 (Cyanocobalamin)..... | 0.1 mg |
| Vitamin C (Ascorbic acid)..... | 250 mg |

ANALYTICAL CONSTITUENTS

| | |
|---------------------------|--------|
| Humidity | 3.5 % |
| Total Protein | 19.5 % |
| Crude Fats and oils | 14.5 % |
| Crude Fiber | 0.3 % |
| Crude Ash | 4.5 % |
| Calcium | 0.5 % |
| Phosphorus..... | 0.4 % |
| Magnesium | 0.2 % |
| Sodium..... | 0.3 % |

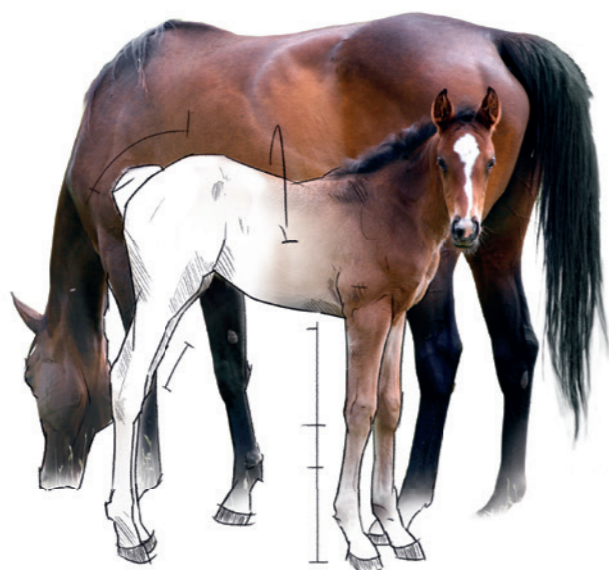
PROPERTIES

A dairy product based replacement milk, containing levels of serum proteins, casein, fats and oils and lactose that are very close to the composition of mares' milk. Enables the daily nutritional requirements of unweaned foals to be met when maternal milk is absent or unavailable in sufficient quantity.

CONSERVATION

Store in a dry place, away from light, at room temperature.
Shelf life : 18 months.

Conceived by our Research and Development department.
Manufactured in our laboratory.



STARTER

DESCRIPTION

Energy catalyst, containing high levels of protected vitamins and chelated trace elements.
Gives the newborn foal support by providing his organism with rapidly available nutriment.

INDICATIONS

Covers the newborn foal's requirements in trace elements and vitamins.

DIRECTIONS FOR USE

For a foal destined to weigh 500 kg at maturity:
The contents of 1 syringe to be swallowed a few hours after birth then repeated at the age of 3 and 6 days old.
If required, renew every 10 days up until the age of 2 months.

For ponies, administer a daily dose in proportion to the animal's liveweight.



15 ml



Gel



COMPOSITION

Deminerallised water, dextrose, sorbitol, natural orange flavouring.

ADDITIVES PER KG

| | |
|--|--------------|
| Zinc (Hydrated amino acids chelate) | 1,250 mg |
| Copper (Hydrated amino acids chelate) | 469 mg |
| Manganese (Amino acids chelate) | 1,250 mg |
| Iron (Sulphate) | 1,563 mg |
| Selenium (L-selenomethionine) | 6.3 mg |
| Vitamin A | 3,750,000 IU |
| Vitamin D3 | 400,000 IU |
| Vitamin E | 28,125 mg |
| Vitamin B1 (Thiamin) | 1,250 mg |
| Vitamin B2 (Riboflavin) | 938 mg |
| Vitamin B3 (PP or Niacin) | 2,188 mg |
| Vitamin B5 (Pantothenic acid) | 938 mg |
| Vitamin B6 (Pyridoxin) | 625 mg |
| Vitamin B8 (Biotin) | 19 mg |
| Vitamin B12 (Cyanocobalamin) | 37.5 mg |
| Vitamin C (protected) (Phosphorylated L-ascorbic acid) | 9,375 mg |

ANALYTICAL CONSTITUENTS

| | |
|---------------------------|-------|
| Humidity | 53 % |
| Total Protein | 2 % |
| Crude Fats and oils | 3.5 % |
| Crude Fiber | 0.5 % |
| Crude Ash | 4.5 % |
| Sodium | 0.5 % |

1 SYRINGE (15ML) OF STARTER PROVIDES

20 mg of chelated* zinc, 7.5 mg of chelated* cooper and 20 mg of chelated* manganese, 25 mg of iron, 0.1 mg of organic selenium, 60,000 IU of vitamin A, 6,400 IU of vitamin D3, 450 mg of vitamin E, 20 mg of vitamin B1, 15 mg of vitamin B2, 35 mg of vitamin B3, 15 mg of vitamin B5, 10 mg of vitamin B6, 0.3 mg of vitamin B8, 0.6 of vitamin B12 and 150 mg of vitamin C.

* Amino acids chelate

PRECAUTIONS FOR USE

Because of the high levels of vitamins and trace elements (including selenium) present, respect the recommendations for use.

CONSERVATION

Store in a dry place, away from light, at room temperature. Shelf life : 18 months.

PROPERTIES

Vitamin A affects protein synthesis and intervenes in tissue development, particularly of the skeleton. It intervenes in the fight against infection and contributes to epithelium integrity. Vitamin A is also of importance for sight.

Vitamin D plays a part in bone mineralization: it increases the intestinal uptake of calcium and facilitates its absorption into the bones.

Vitamins E and C as well as organic selenium (and to a lesser degree, vitamin A), are important biological antioxidants and participate in protecting muscular cells and help recovery after exertion.

Vitamin B1 is vital to the metabolism of carbohydrates.

Vitamin B2 activates the catabolism of lactic acid (like zinc) and intervenes, as do vitamins B3 and B8, in the metabolism of carbohydrates and lipids.

Vitamin B5 plays a role in the oxidation of fatty acids and carbohydrates.

Vitamin B6 intervenes in the regulation of the blood sugar level and contributes to the releasing of sugars from the glycogen reserves of the organism.

Vitamin B12 is known for its role in the formation of red blood cells (just like vitamin B6). More generally, it is involved in the metabolism of carbohydrates, proteins and lipids.

100 % of the selenium provided is in the form of L-selenomethionine, the principal form under which selenium is stored in the organism.

Copper increases the use of fats for the production of energy.

Copper and zinc are essential co-factors of copper-zinc superoxide dismutase (CuZn-SOD), fundamental enzyme in the antioxidant struggle.

Iron is a co-factor of numerous enzymes which intervene in energy production (cellular respiration).

Manganese intervenes in the metabolism of carbohydrates and fats. It also participates in neutralising free radicals as a co-factor of manganese superoxide dismutase (Mn-SOD).



BOOSTER

DESCRIPTION

Energy catalyst, containing high levels of protected vitamins and chelated trace elements.

Provides athletic horse support for strenuous work thanks to the supply of rapidly available nutriment for his organism.

INDICATIONS

Provides extra vitamins and trace elements on competition days.

DIRECTIONS FOR USE

Adult horse (500 kg): the contents of 1 syringe to be swallowed (equivalent to 12 ml/100 kg of liveweight) few hours before the effort (outside of feeds). In case of strenuous exercise, it's possible to renew the dose (1 syringe) the evening after.

For ponies, administer a daily dose in proportion to the animal's liveweight.

*Free from Naturally Occurring Prohibited Substances (NOPS) in accordance with the regulations of racing codes, FEI, FFE and SHF.



60 ml



Gel

COMPOSITION

Demineralsed water, fructose, sorbitol, natural orange flavouring.

ADDITIVES PER KG

| | |
|---|------------|
| Zinc (Hydrated amino acids chelate) | 1,125 mg |
| Copper (Hydrated amino acids chelate) | 375 mg |
| Manganese (Amino acids chelate) | 375 mg |
| Iron (Sulphate) | 1,500 mg |
| Selenium (L-Selenomethionine) | 30 mg |
| Vitamin A | 900,000 IU |
| Vitamin E | 75,000 mg |
| Vitamin B1 (Thiamin) | 1,500 mg |
| Vitamin B2 (Riboflavin) | 1,200 mg |
| Vitamin B3 (PP or Niacin) | 2,625 mg |
| Vitamin B5 (Pantothenic acid) | 1,125 mg |
| Vitamin B6 (Pyridoxine) | 750 mg |
| Vitamin B8 (Biotin) | 22.5 mg |
| Vitamin B9 (Folic acid) | 900 mg |
| Vitamin B12 (Cyanocobalamin) | 22.5 mg |
| Protected vitamin C | |
| (Phosphorylated L-ascorbic acid) | 15,000 mg |

ANALYTICAL CONSTITUENTS

| | |
|---------------------|------|
| Humidity | 50% |
| Total Protein | 2% |
| Fats and oils | 10% |
| Crude fiber | 0.3% |
| Ash | 5% |
| Sodium | 0.2% |

1 SYRINGE (60ML) OF BOOSTER PROVIDES

75 mg of chelated* zinc, 25 mg of chelated* copper and 25 mg of chelated* manganese, 100 mg of iron, 2 mg of organic selenium, 60,000 IU of vitamin A, 5,000 mg of vitamin E, 100 mg of vitamin B1, 80 mg of vitamin B2, 175 mg of vitamin B3, 75 mg of vitamin B5, 50 mg of vitamin B6, 1.5 mg of vitamin B8, 60 mg of vitamin B9, 1.5 mg of vitamin B12 and 1,000 mg of protected vitamin C.

PROPERTIES

Vitamins E and C also organic selenium (and to a lesser extent vitamin A) are important biological antioxidants taking part in the protection of muscle cells and helping recovery after effort.

Vitamin B1 is essential for the metabolism of carbohydrates. At a muscular level during sprints, it intervenes in the combustion of sugars.

Vitamin B2 activates the catabolism of lactic acid (as does zinc) and intervenes in the metabolism of carbohydrates and lipids (as do vitamins B3 and B8).

Vitamin B5 plays a role in fatty acid and carbohydrates oxidation.

Vitamin B6 intervenes in regulating blood sugar levels by contributing to the liberation of sugars from glycogen reserves in the organism.

Vitamin B12 is known for its role in red blood cell formation (just like vitamins B6 and B9). On a more general level, it is implied in the metabolism of carbohydrates, proteins and lipids.

Copper increases lipid use in energy production.

Copper and zinc are essential co-factors of copper-zinc superoxide dismutase (CuZn-SOD), a fundamental enzyme in the antioxidant struggle.

Iron is a co-factor to numerous enzymes which intervene in energy production (cellular respiration).

Manganese intervenes in the metabolism of lipids and carbohydrates. As co-factor of manganese superoxide dismutase (Mn-SOD) it is also involved in neutralising free radicals.

PRECAUTIONS FOR USE

Because of the high levels of vitamins and trace elements (including selenium) present, respect the recommendations for use.

CONSERVATION

Store in a dry place, away from light, at room temperature.
Shelf life : 18 months.



IMMUNE

DESCRIPTION

Source of purified beta-glucans and chelated zinc.
Helps to strengthen immunity.

INDICATIONS

- Strengthen immunity:
 - During periods of intensive work
 - During the winter
 - During viral outbreaks
- To support, and alongside medical treatments prescribed by the veterinarian in case of:
 - Drop in form, performance
 - Known problems of infection (respiratory, digestive, etc.)
- Prepare for annual vaccinations against equine influenza / equine rhinopneumonitis.
- Support sporting performances.
- Improving colostrum quality.

DIRECTIONS FOR USE

Distribute with cereals or compound feeds. Mix well into the ration.
1 measuring cup = 90 g

| | RECOMMENDED DAILY DOSE | HOW LONG TO ADMINISTER |
|----------------------|---|------------------------|
| Adult horse (500 kg) | 1 measuring cup (90 g) equivalent to 18 g / 100 kg (liveweight) | Between 1 to 3 months |

For ponies and youngstock, administer a daily dose in proportion to the animal's liveweight.

For gestating mares, it's recommended to start administering 6 to 8 weeks before the presumed foaling date.

A 3 kg container is sufficient for a 1 month.



3 kg



Small pellets

**Free from Naturally Occurring Prohibited Substances (NOPS) in accordance with the regulations of racing codes, FEI, FFE and SHF.*



COMPOSITION

Barley, purified beta-(1,3/1,6)-glucans, sodium chloride.

ADDITIVES PER KG

Zinc (Hydrated amino acids chelate) 4,000 mg

ANALYTICAL CONSTITUENTS

Humidity 10.5%
Total protein 9%
Fats and oils 3.5%
Crude fiber 4.5%
Ash 6%
Calcium 0.5%
Phosphorus 0.3%
Sodium 0.6%

1 MEASURING CUP (90 G) OF IMMUNE PROVIDES

5,000 mg de beta-(1,3 / 1,6)-glucans and 360 mg of chelated zinc.

PROPERTIES

Beta-(1,3/1,6)-glucans extracted from the yeast cell walls of bakers yeast (*Saccharomyces cerevisiae*) have recognised immunity stimulating properties. They have been the subject of hundreds of articles showing that beta glucans induce an intensified immune reaction.

The powerful immunity stimulating effect of beta glucans from bakers yeast is due to their special molecular structure which is able to activate specific receptors present on the cell membranes of macrophages.

In this manner, the activation of macrophages by beta-glucans increases their phagocytosis ability and leads to their production of cytokines being modulated, intervening in innate (immediate) and adaptive (specific) immunity by participating in lymphocyte activation.

By boosting immunity in general, beta glucans have positive repercussions on zoo-technical and athletic performances in animals.

Supplementation with beta glucans during the final two months of gestation increases antibody levels in the colostrum, thus contributing to improving passive immunity transfer between dam and foal.

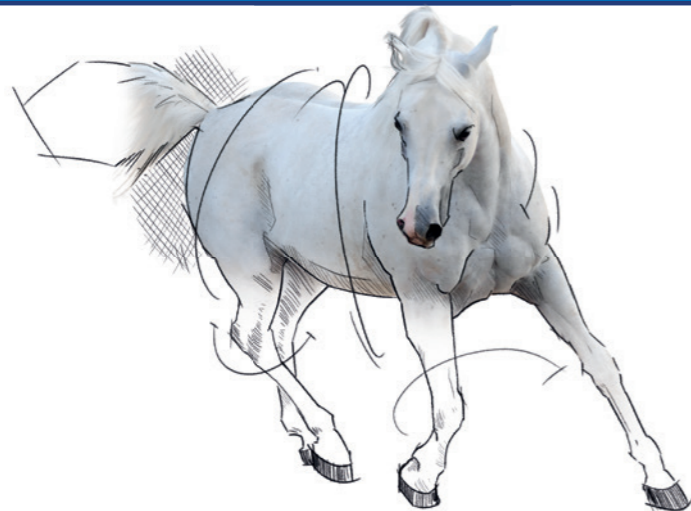
Zinc plays a central role in the immune response. It's essential for hormones and enzymes directly implicated in immunity.

PRECAUTIONS FOR USE

It's recommended to limit the use of IMMUNE to a maximum of 3 months.

CONSERVATION

Store in a dry place, away from light, at room temperature.
Shelf life : 18 months.



ELECTROLYTES GEL

DESCRIPTION

Mineral salt concentrate that allows the rapid reconstitution of electrolyte stocks lost through sweating.

INDICATIONS

Moderate, intense or prolonged muscular effort leading to sweating.
Transport over long distances.

DIRECTIONS FOR USE

Clean cool water should be permanently available.

| ADULT HORSE (500 KG) | RECOMMENDED DOSE | WHEN TO ADMINISTER |
|---|--|---|
| Moderate efforts, transport over long distances | 1/2 to 1 syringe equivalent to 6 to 12 ml /100 kg (liveweight) | After the event |
| Intense short efforts (racing) | 1 to 2 syringes equivalent to 12 to 24 ml /100 kg (liveweight) | 1 syringe the evening following the event. Repeat the morning after in the case of heavy sweating. |
| Prolonged intense efforts (endurance) | 1 to 2 syringes equivalent to 12 to 24 ml /100 kg (liveweight) | 1 syringe morning and/or evening up to 10 days following the event |

For ponies, administer a daily dose in proportion to the animal's liveweight.



60 ml



Gel



*Free from Naturally Occurring Prohibited Substances (NOPS) in accordance with the regulations of racing codes, FEI, FFE and SHF.

COMPOSITION

Demineralsed water, sodium chloride, dextrose, potassium chloride, fructose, sodium citrate, magnesium chloride, glycine, natural green apple flavouring.

ANALYTICAL CONSTITUENTS

Humidity.....45%
Total protein.....1.5%
Ash.....32%
Sodium.....9%

1 SYRINGE OF ELECTROLYTES GEL (60ML) PROVIDES

13,175 mg of chloride, 6,975 mg of sodium, 3,480 mg of potassium and 275 mg of magnesium.

PROPERTIES

The ingestion of the mineral salts contained in **ELECTROLYTES GEL** allows the rapid reconstitution of electrolyte stocks lost through sweating.

A 60 ml syringe compensates for the chloride, sodium, potassium and magnesium losses in approximately 2.5 L of sweat.

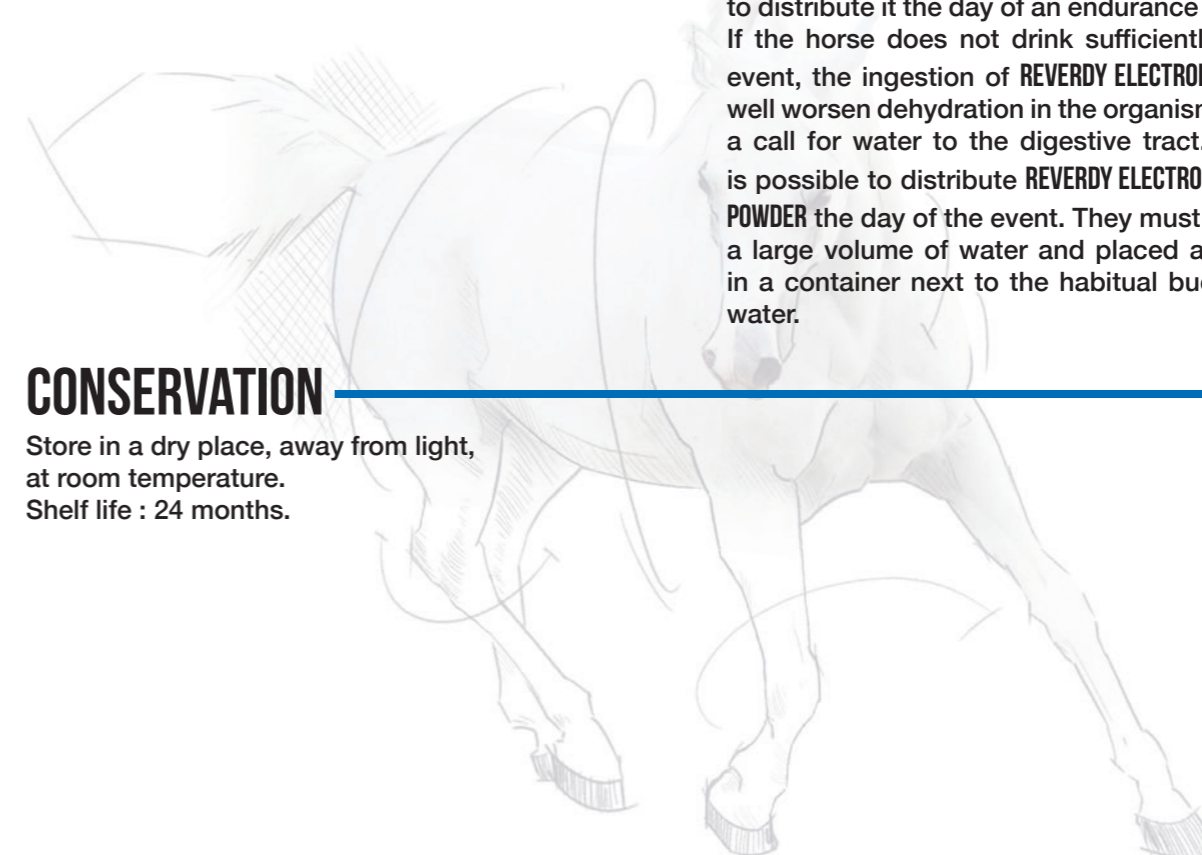
Dextrose and glycine facilitate sodium absorption.

PRECAUTIONS FOR USE

Because of the high concentration of mineral salts contained in **REVERDY ELECTROLYTES GEL**, it is not advisable to distribute it the day of an endurance competition. If the horse does not drink sufficiently during the event, the ingestion of **REVERDY ELECTROLYTES GEL** may well worsen dehydration in the organism by creating a call for water to the digestive tract. However, it is possible to distribute **REVERDY ELECTROLYTES LIQUID** or **POWDER** the day of the event. They must be diluted in a large volume of water and placed at disposition in a container next to the habitual bucket of fresh water.

CONSERVATION

Store in a dry place, away from light, at room temperature.
Shelf life : 24 months.



Health & performance



ELECTROLYTES LIQUID

DESCRIPTION

Mineral salt concentrate that allows the rapid reconstitution of electrolyte stocks lost through sweating.

INDICATIONS

Moderate, intense or prolonged muscular effort leading to sweating. Transport over long distances.

DIRECTIONS FOR USE

Distribute by mixing with the drinking water, cereals or the pelleted feed, or administer directly into the mouth using a syringe. Clean cool water should be permanently available. Shake well before use.

| ADULT HORSE (500 KG) | RECOMMENDED DOSE | WHEN TO ADMINISTER |
|---|---|--|
| Moderate efforts, transport over long distances | 50 to 75 ml equivalent to 10 to 15 ml /100 kg (liveweight) | After the event |
| Intense short efforts (racing) | 75 to 150 ml equivalent to 15 to 30 ml /100 kg (liveweight) | 75 ml the evening following the event. Repeat the morning after in the case of heavy sweating. |
| Prolonged intense efforts (endurance) | 75 to 150 ml equivalent to 15 to 30 ml /100 kg (liveweight) | 75 ml morning and evening up to 10 days following the event |

For ponies, administer a daily dose in proportion to the animal's liveweight.



1L

5L



Liquid



*Free from Naturally Occurring Prohibited Substances (NOPS) in accordance with the regulations of racing codes, FEI, FFE and SHF.

COMPOSITION

Demineralsed water, sodium chloride, sodium citrate, potassium chloride, dextrose, magnesium chloride, glycine, natural orange flavouring.

ANALYTICAL CONSTITUENTS

Humidity66%
 Total protein1.2%
 Ash26%
 Sodium7.7%

50 ML OF ELECTROLYTES GEL PROVIDE

7,945 mg of chloride, 4,635 mg of sodium, 2,100 mg of potassium and 165 mg of magnesium.

PROPERTIES

The ingestion of the mineral salts contained in **ELECTROLYTES LIQUID** allows the rapid reconstitution of electrolyte stocks lost through sweating.

A 50 ml dose compensates for the chloride, sodium, potassium and magnesium losses in approximately 1.5 L of sweat.

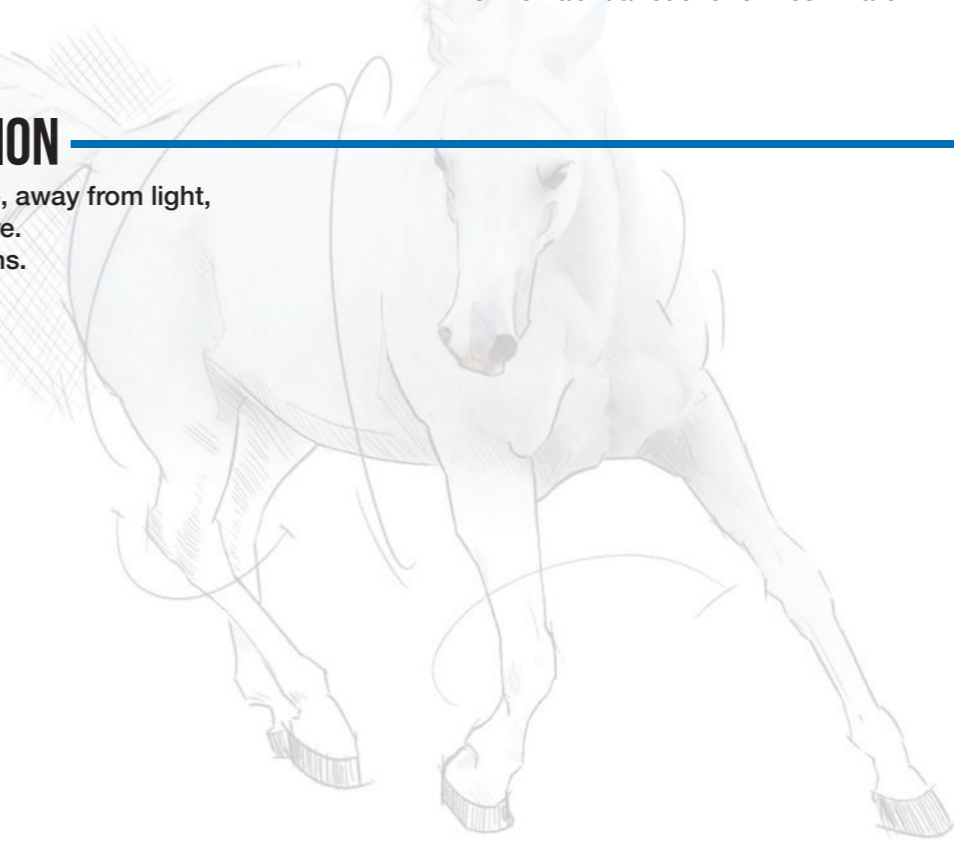
Dextrose and glycine facilitate sodium absorption.

PRECAUTIONS FOR USE

During an endurance event, it is possible to distribute **ELECTROLYTES LIQUID** the same day. However, it must be diluted in a large volume of water and placed at disposition in a container next to the habitual bucket of fresh water.

CONSERVATION

Store in a dry place, away from light, at room temperature. Shelf life : 24 months.



Conceived by our Research and Development department. Manufactured in our laboratory.

Health & performance



ELECTROLYTES POWDER

DESCRIPTION

Mineral salt concentrate that allows the rapid reconstitution of electrolyte stocks lost through sweating.

INDICATIONS

Moderate, intense or prolonged muscular effort leading to sweating. Transport over long distances.

DIRECTIONS FOR USE

Distribute by mixing with cereals or pelleted feed. Clean cool water should be made permanently available.
1 measure = 50 g

| ADULT HORSE (500 KG) | RECOMMENDED DOSE | WHEN TO ADMINISTER |
|---|--|---|
| Moderate efforts, transport over long distances | 1/2 to 1 measure (25 to 50 g) equivalent to 5 to 10 g /100 kg (liveweight) | After the event |
| Intense short efforts (racing) | 1 to 2 measures (50 to 100 g) equivalent to 10 to 20 g /100 kg (liveweight) | 1 measure the evening following the event. Repeat the morning after in the case of heavy sweating. |
| Prolonged intense efforts (endurance) | 1 to 2 measures (50 to 100 g) equivalent to 10 to 20 g /100 kg (liveweight) | 1 measure morning and/or evening up to 10 days following the event |

For ponies, administer a daily dose in proportion to the animal's liveweight.



2.2 kg 5 kg



Powder



*Free from Naturally Occurring Prohibited Substances (NOPS) in accordance with the regulations of racing codes, FEI, FFE and SHF.

COMPOSITION

Sodium chloride, potassium chloride, glycine, magnesium sulphate, sodium bicarbonate, sodium citrate, natural green apple flavouring.

ADDITIVES PER KG

Vitamin E5,000 mg

ANALYTICAL CONSTITUENTS

Humidity1%
Total protein10.5%
Ash85.5%
Chlorides44%
Sodium22.5%
Potassium12%
Magnesium0.7%

1 MEASURE OF ELECTROLYTES POWDER (50 G) PROVIDES

22,000 mg of chloride, 11,250 mg of sodium, 6,000 mg of potassium, 350 mg of magnesium and 250 mg of vitamin E.

PROPERTIES

The ingestion of the mineral salts contained in **ELECTROLYTES POWDER** allows the rapid reconstitution of the electrolyte stocks lost through sweating.

A 50 g dose compensates for the chloride, sodium, potassium and magnesium losses in approximately 4 L of sweat.

Glycine facilitate sodium absorption.

PRECAUTIONS FOR USE

During an endurance event, it is possible to distribute **ELECTROLYTES POWDER** the same day. However, it must be diluted in a large volume of water and placed at disposition in a container next to the habitual bucket of fresh water.

CONSERVATION

Store in a dry place, away from light, at room temperature.
Shelf life : 24 months.

Conceived by our Research and Development department.
Manufactured in our laboratory.

Muscles



NATURAL E

DESCRIPTION

A concentrate of protected natural vitamin E.
An important biological antioxidant, playing a primordial role in cell membrane protection.

INDICATIONS

- Covers daily requirements in vitamin E.
REVERDY NATUREL E can be used at higher doses in the following situations:
- In preventing muscular problems in horses prone to chronic myopathies ("tying up"), or in intensive training
 - Before a competition
 - Neurological disorders such as MND (Motor Neuron Disease)

DIRECTIONS FOR USE

Distribute by mixing with cereals or pelleted feed, or administer directly into the mouth using a syringe.

| ADULT HORSE (500 KG) | RECOMMENDED DAILY DOSE | DURATION |
|---|---|----------------------------------|
| Fulfilling vitamin E requirements | 5 to 10 ml equivalent to 1 to 2 ml /100 kg (liveweight) | Continuously |
| Prevention of muscular disorders | 20 to 30 ml equivalent to 4 to 6 ml /100 kg (liveweight) | During the entire period of risk |
| Before a competition or any stressful situation | 20 to 50 ml equivalent to 4 to 10 ml /100 kg (liveweight) | Few hours before the event |
| Motor Neurone Disease (MND) | 40 to 50 ml equivalent to 8 to 10 ml /100 kg (liveweight) | Continuously |

For ponies, administer a daily dose in proportion to the animal's liveweight.



1L



Liquid



*Free from Naturally Occurring Prohibited Substances (NOPS) in accordance with the regulations of racing codes, FEI, FFE and SHF.

COMPOSITION

Non GMO* virgin corn (maize) oil, natural tocopherols. * <0.1%

ADDITIVES PER LITRE

Natural vitamin E (d-α-tocopherol acetate).....
.....100,000 mg

ANALYTICAL CONSTITUENTS

Fats and oils99%

10 ML OF NATURAL E PROVIDE

1,000 mg equivalent to 1,360 IU of natural vitamin E.

PROPERTIES

Vitamine E is an important biological antioxidant playing a primordial role in cell membrane protection.

The natural form of vitamin E is more bioavailable than the synthetic form.

CONSERVATION

Store in a dry place, away from light, at room temperature.
Shelf life : 36 months.



Conceived by our Research and Development department.
Manufactured in our laboratory.

Muscles



E SELENIUM

DESCRIPTION

A nutritional supplement providing protected vitamin E and organic selenium.

INDICATIONS

Covers daily requirements in vitamin E and selenium.

REVERDY E SELENIUM can be used at higher doses in the following situations:

- To help prevent muscular problems in horses prone to chronic myopathies (“tying up”), or in intensive training.
- Neurological disorders such as MND (Motor Neuron Disease).

DIRECTIONS FOR USE

Feed alone, or mix with cereals or a compound feed. If **E SELENIUM** is being given alongside an industrial compound feed, the amount to be distributed will depend on the quantity of feed fed and the levels of vitamin E and selenium in the latter. **1 measure = 30 g**

| ADULT HORSE (500 KG) | RECOMMENDED DAILY DOSE |
|--------------------------|--|
| Maintenance | ½ to 1 measure (15 to 30 g) equivalent to 3 to 6 g /100 kg (liveweight) |
| Horses in work | 1 to 3 measures (30 to 90 g) equivalent to 6 to 18 g /100 kg (liveweight) |
| Growing youngsters | ½ to 1 measure (15 to 30 g) equivalent to 3 to 6 g /100 kg (liveweight) |
| Broodmares and stallions | 1 to 3 measures (30 to 90 g) equivalent to 6 to 18 g /100 kg (liveweight) |

For ponies, administer a daily dose in proportion to the animal's liveweight.



1.3 kg 3 kg 10 kg



Small pellets



*Free from Naturally Occurring Prohibited Substances (NOPS) in accordance with the regulations of racing codes, FEI, FFE and SHF.

COMPOSITION

Barley, calcium carbonate, fructose.

ADDITIVES PER KG

Vitamin E 33,333 mg
Selenium (L-selenomethionine)..... 16.7 mg

ANALYTICAL CONSTITUENTS

Humidity 12.5%
Total Protein 9%
Crude fats and oils 6%
Crude fiber 4%
Crude Ash 9%
Calcium 1%
Phosphorus..... 0.3%
Magnesium 0.3%
Sodium 0.1%

1 MEASURE OF E SELENIUM (30G) PROVIDES

1,000 mg of vitamin E and 0.5 mg of organic selenium.

PROPERTIES

Vitamin E is a major biological antioxidant playing a primordial role in the protection of cell membranes in the organism. Its use in the sports horse is of particular interest for helping prevent muscular problems (for example, “tying up”). Furthermore, it not only improves fertility in breeding stock but also, via colostrum, the transfer of passive immunity (antibodies) between the mother and newborn.

Selenium is a trace element which, as a co-factor of the enzyme glutathione peroxidase (GSH-Px), plays a key role in the antioxidant battle alongside vitamin E. 100 % of the selenium is supplied as selenomethionine, the principal form under which selenium is stored in the organism. Selenium from this organic source is better assimilated and stored than that provided by sodium selenite (the inorganic form).

PRECAUTIONS FOR USE

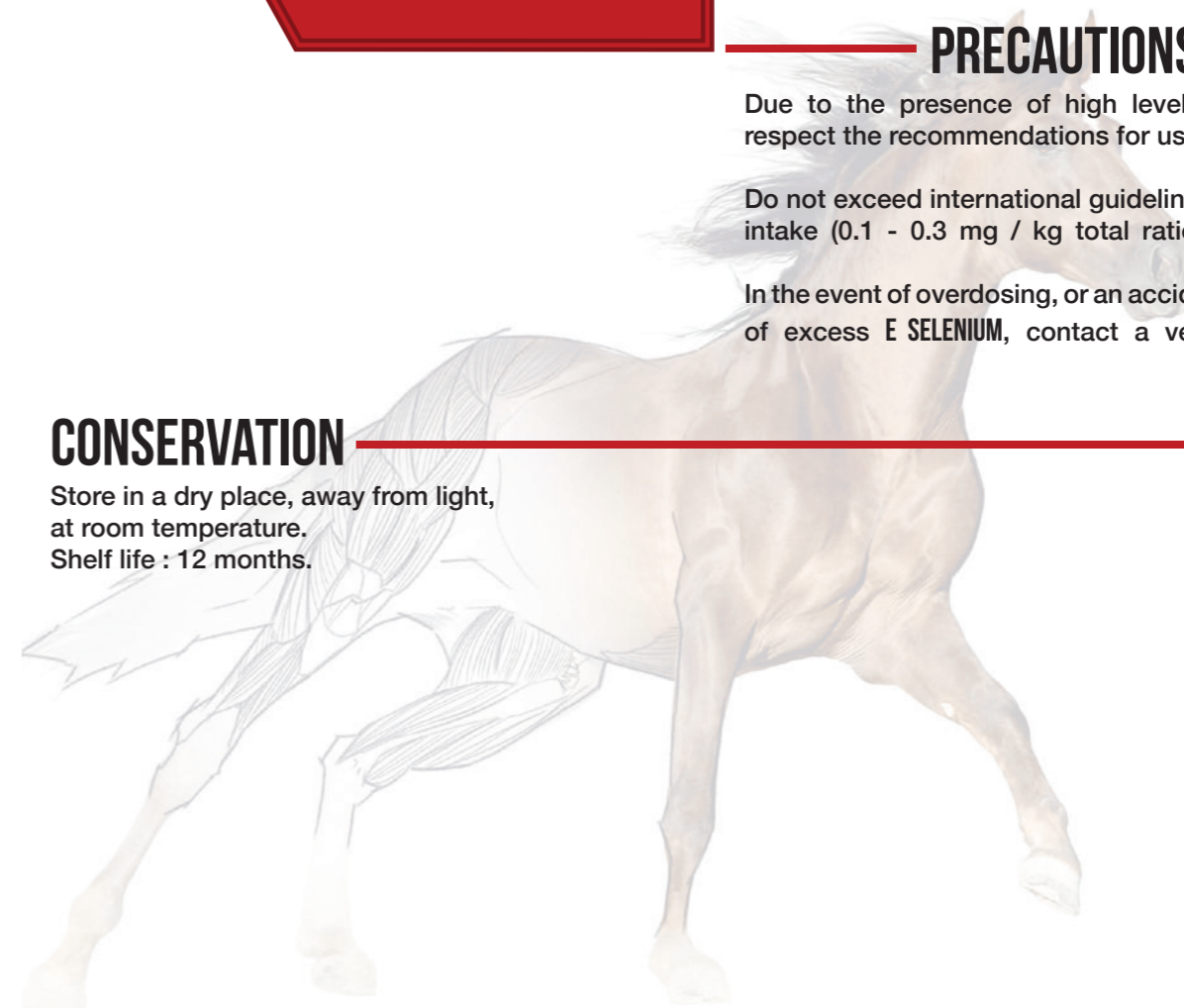
Due to the presence of high levels of selenium, respect the recommendations for use.

Do not exceed international guidelines for selenium intake (0.1 - 0.3 mg / kg total ration dry matter).

In the event of overdosing, or an accidental ingestion of excess **E SELENIUM**, contact a vet immediately.

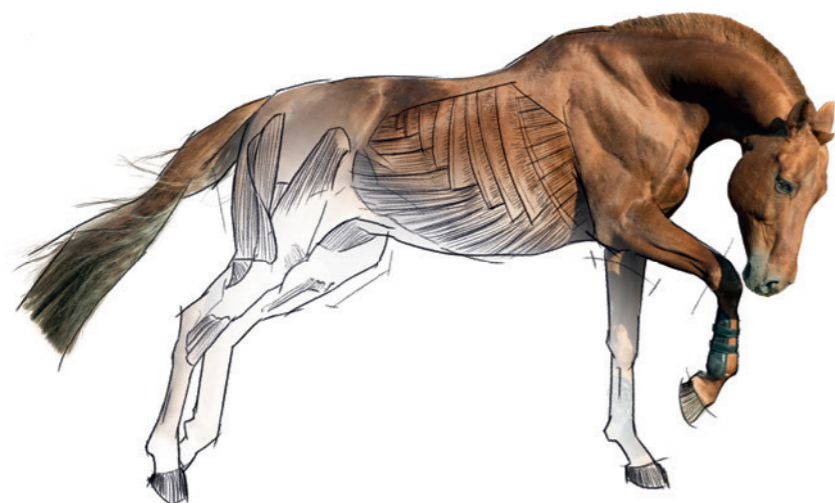
CONSERVATION

Store in a dry place, away from light, at room temperature.
Shelf life : 12 months.



Conceived by our Research and Development department.
Manufactured in our laboratory.

Muscles



MYOSTIMUL

DESCRIPTION

A source of essential amino acids, vitamin E and organic selenium.
Contributes to improving muscular development and protection.

INDICATIONS

Covers daily requirements in essential amino acids.
Supports muscular development in young growing horses and adult horses.

DIRECTIONS FOR USE

Distribute with cereals or compound feed.
1 measuring cup = 100 g

| ADULT HORSES, YOUNG GROWING HORSES (ADULT LIVEWEIGHT = 500 KG) | DAILY DOSE |
|--|---|
| Maintenance dose | 1 measuring cup (100 g) equivalent to 20 g /100 kg (adult liveweight) |
| Maximum recommended dose | 3 measuring cups (300 g) equivalent to 60 g /100 kg (adult liveweight) |

For ponies, administer a daily dose in proportion to the animal's liveweight.



3 kg 10 kg



Small pellets



*Free from Naturally Occurring Prohibited Substances (NOPS) in accordance with the regulations of racing codes, FEI, FFE and SHF.

COMPOSITION

Soya bean meal without GMO*, milk serum protein concentrate, fructose.

*<0.1%

ADDITIVES PER KG

DL-methionine 2,420 mg
Selenium (L-selenomethionine)..... 2.5 mg
Vitamin E 5,000 mg

ANALYTICAL CONSTITUENTS

Humidity 12.5%
Total proteins 47.5%
Fats and oils 3%
Crude fiber 3%
Ash 8.5%
Calcium 0.3%
Phosphorus..... 0.5%
Magnesium 0.5%
Sodium 0.4%

1 MEASURING CUP (100G) OF MYOSTIMUL PROVIDES

39 g of digestible proteins, including 3,350 mg of lysine, 2,000 mg of threonine, 1,000 mg of methionine, 2,300 mg of isoleucine, 4,050 mg of leucine, 2,350 mg of valine and 3,000 mg of arginine as well as 500 mg of vitamin E and 0.25 mg of organic selenium.

PROPERTIES

The combination of GMO-free French soya bean meal (<0.1%) and serum milk protein concentrate makes it possible to supply the main essential amino acids in proportions close to those found in mare's milk.

Providing these amino acids promotes muscle development in both young growing and adult horses at rest or at work.

Feeding 1 cup (100 g) of REVERDY MYOSTIMUL provides a similar quantity of lysine, an essential amino acid in the horse, to that provided by 1 L (0.7 kg) of REVERDY ADULT ENERGY.

Vitamin E is a major biological antioxidant that plays a key role in protecting the cell membranes of the body. Its use is particularly interesting in the sports horse as it helps to prevent muscle disorders ("tying-up").

Selenium is a trace element which, as a co-factor of the enzyme glutathione peroxidase (GSH-Px), plays a key role in the antioxidant battle alongside vitamin E. 100 % of the selenium is supplied as selenomethionine, the principal form under which selenium is stored in the organism. Selenium from this organic source is better assimilated and stored than that provided by sodium selenite (the inorganic form).

PRECAUTIONS FOR USE

Due to the presence of high levels of selenium and vitamin E, respect the recommendations.

CONSERVATION

Store in a dry place, away from light,
at room temperature.
Shelf life : 18 months.

Conceived by our Research and Development department.
Manufactured in our laboratory.

Digestive system



CARE

DESCRIPTION

A combination of gastric acidity regulators and L-glutamine. Takes part in preventing and healing stomach ulcers in the horse.

INDICATIONS

Preventing gastric ulcers.

REVERDY CARE can be used at higher doses in the following situations:

- Suspicion of gastric ulcers in stressed horses.
- Stress causing situations:
 - transport over long distances,
 - periods of intense training,
 - preparation for the sale ring,
 - etc.
- Known presence of gastric ulcers, in addition to a suitable diet.

DIRECTIONS FOR USE

Mix well into the feed.

Distribute the daily dose divided between meals.

1 measure = 45 g

| ADULT HORSE (500 KG) | DAILY DOSE |
|--------------------------|---|
| Preventative dose | 1 measure (45 g) equivalent to 9 g /100 kg (liveweight) |
| Maximum recommended dose | 2 measure (90 g) equivalent to 18 g /100 kg (liveweight) |

For ponies and youngstocks, administer a daily dose in proportion to the animal's liveweight.



1.8 kg

4.5 kg



Powder



*Free from Naturally Occurring Prohibited Substances (NOPS) in accordance with the regulations of racing codes, FEI, FFE and SHF.

COMPOSITION

Lithothamnion (*Phymatolithon calcareum*), scFOS (Short chain Fructo-oligosaccharides), natural green apple flavouring.

ADDITIVES PER KG

L-glutamine.....200,000 mg
Zinc (Sulphate).....4,445 mg

ANALYTICAL CONSTITUENTS

Humidity.....2%
Total protein.....27%
Crude fiber.....0.9%
Ash.....42%
Calcium.....13%
Sodium.....0.3%

1 MEASURE (45G) OF CARE PROVIDES

20,000 mg of lithothamnion, 12,500 mg of scFOS, 9,000 mg of L-glutamine and 200 mg of zinc.

PROPERTIES

Lithothamnion is calcareous seaweed presenting a sponge like ("honeycomb") structure. This special characteristic explains its prolonged and highly effective buffering effect in an acid environment. Its effectiveness in neutralising the acid secretions of the stomach has been validated in the horse. In horses studied, giving the same quantity of lithothamnion as contained in the equivalent of 2 measures of CARE over a 30 day period, permitted a considerable reduction in ulcerous lesions.

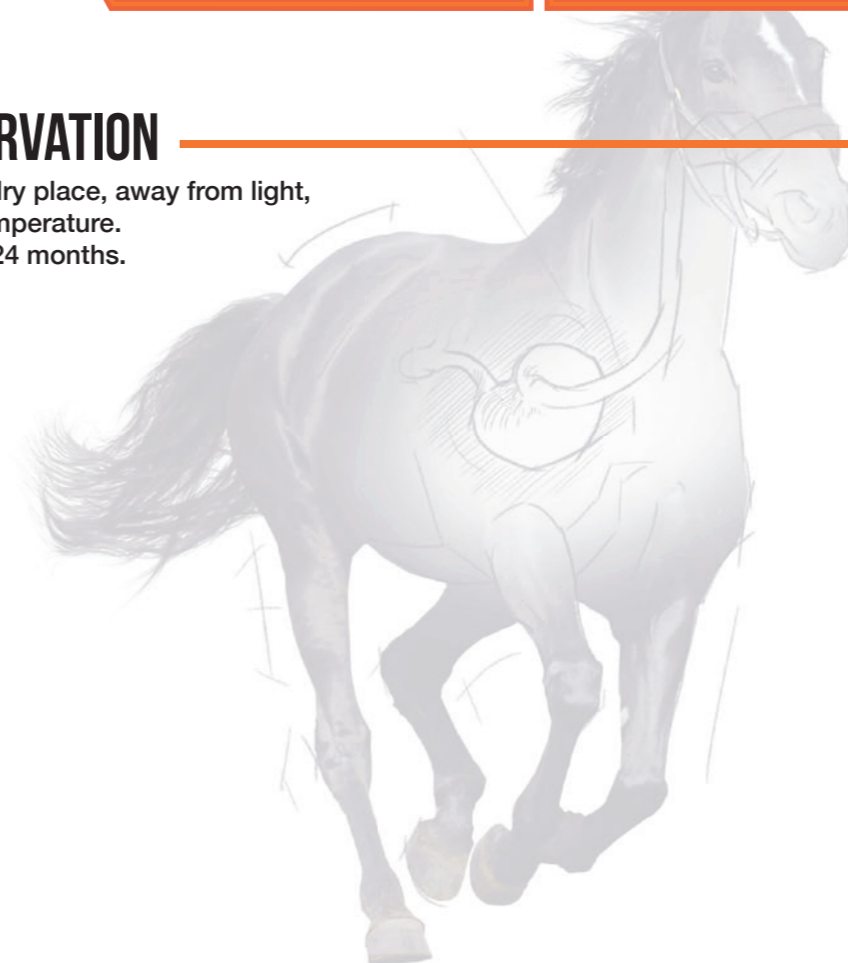
It has been proven that scFOS reduce the acidity of the stomach contents in the horse. As prebiotics, they increase the quantity and activity of the intestinal flora which use lactic acid.

L-glutamine is a significant source of energy for fast renewing cells, such as those of the digestive tract. This amino acid thus participates in preserving the integrity of the gastric mucosa and helps heal ulcerous lesions.

Zinc sulphate is involved in the rapid and prolonged inhibition of acid secretions in the stomach.

CONSERVATION

Store in a dry place, away from light, at room temperature.
Shelf life : 24 months.



Conceived by our Research and Development department.
Manufactured in our laboratory.

Digestive system



FLORA

DESCRIPTION

An association of probiotics and postbiotics.
Supports the horse's intestinal flora and improves the digestibility of the feed ration.
Helps to improve coat shine and to promote a gain in body condition in a matter of weeks.

INDICATIONS

Supports the intestinal flora. Improves the digestibility of the ration.
REVERDY FLORA can be used at higher doses in the following situations:

- Insufficient body condition.
- Dull coat.
- When the intestinal flora comes under stress (in order to prevent the appearance of digestive disorders causing diarrhoea) :
 - › hospitalisation,
 - › intense efforts,
 - › weaning-up,
 - › turn-out to grass,
 - › transport over long distances,
 - › preparation for the sale ring,
 - › etc.

DIRECTIONS FOR USE

Distribute by mixing with cereals or the pelleted feed.
Mix well into the ration. 1 measure = 35 g

| ADULT HORSE (500 KG) | DAILY DOSE |
|--------------------------|---|
| Maintenance dose | 1 measure (35 g) equivalent to 7 g /100 kg (liveweight) |
| Maximum recommended dose | 3 measures (105 g) equivalent to 21 g /100 kg (liveweight) |

For ponies and youngstocks, administer a daily dose in proportion to the animal's liveweight.



Powder



*Free from Naturally Occurring Prohibited Substances (NOPS) in accordance with the regulations of racing codes, FEI, FFE and SHF.

COMPOSITION

Assimilation factors obtained from the lactic fermentation of germinated barley grains, ferments from organic cereals, natural green apple flavouring.

ADDITIVES PER KG

Live yeast (*Saccharomyces cerevisiae* Sc 47 strain)
..... 200,000 mg
equivalent to 2,000 x10⁹ CFU

ANALYTICAL CONSTITUENTS

Humidity9%
Total protein15%
Fats and oils2.7%
Crude fiber3%
Ash2.7%
Phosphorus.....0.4%
Calcium0.1%

1 MEASURE (35G) OF FLORA PROVIDES

7,000 mg (70 billion CFU) of live yeast, 14,000 mg of assimilation factors and 13,650 mg of ferments from organic cereals.

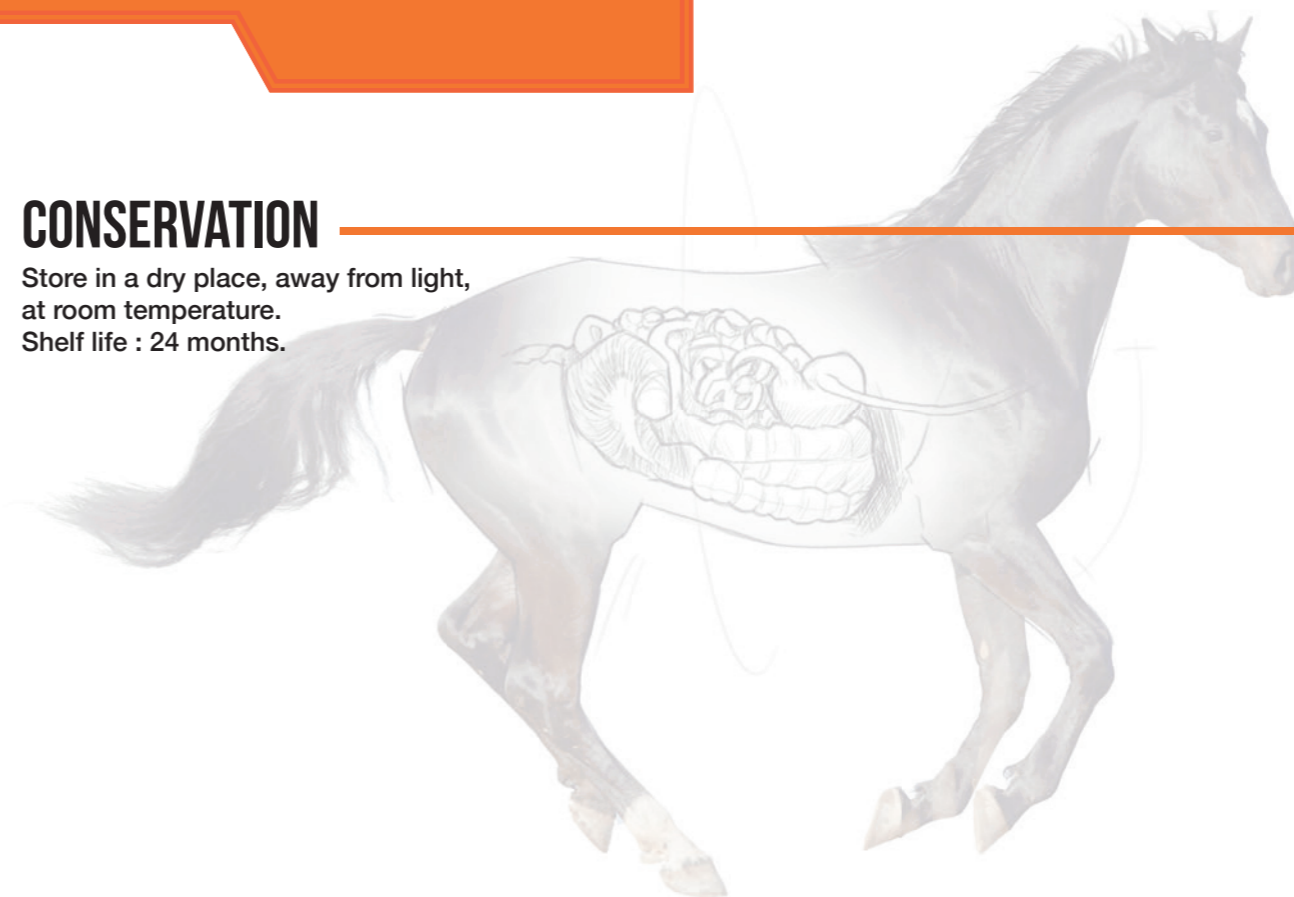
PROPERTIES

Assimilation factors and ferments from cereals (postbiotics) as well as live yeasts (probiotics) reinforce the horse's intestinal flora and improve the digestibility of the feed ration.

Their action can be observed in a shinier coat and an improvement in body condition in a matter of weeks.

CONSERVATION

Store in a dry place, away from light,
at room temperature.
Shelf life : 24 months.



Conceived by our Research and Development department.
Manufactured in our laboratory.

Digestive system



GASTRIC GEL

DESCRIPTION

An aloe vera gel, aluminium phosphate, glutamine and scFOS based gastric protector. Contributes to limiting acid secretions of the stomach, protecting the cells of the gastric mucosa and stimulating mucus production.

INDICATIONS

- Prevention of gastric ulcers.
- REVERDY GASTRIC GEL can be used at higher doses in the following situations:
 - Suspicion of gastric ulcers in stressed horses
 - Stressful conditions: transport over long distances, periods of intense training, preparation for the sale ring, etc.
 - Known presence of gastric ulcers, in complement to veterinary treatment and a suitable diet.
- Diarrhea in foals under the mother.

DIRECTIONS FOR USE

Gastric ulcers: administer preferably 1h before the concentrate feed, an effort, transport or any stressful situation.

| ADULT HORSE (500 KG) | DAILY DOSE |
|--------------------------|--|
| Preventative dose | 1 syringe (55 ml) equivalent to 11 ml / 100 kg (liveweight) |
| Maximum recommended dose | 3 syringes (165 ml) equivalent to 33 ml / 100 kg (liveweight) |

Diarrhea in foals under the mother (weight at maturity estimated at 500 kg): administer ½ a syringe morning and evening for 3 days. For ponies and youngstocks, administer a daily dose in proportion to the animal's liveweight.



55 ml



Gel



*Free from Naturally Occurring Prohibited Substances (NOPS) in accordance with the regulations of racing codes, FEI, FFE and SHF.

COMPOSITION

Aluminium phosphate (gel), pure Aloe vera (gel), scFOS (short chain Fructo-oligosaccharides), sorbitol, natural green apple flavouring.

ADDITIVES PER KG

L-glutamine..... 136,986 mg

ANALYTICAL CONSTITUENTS

Humidity.....54%
Total protein.....16%
Ash.....10%
Phosphorus.....2.2%
Sodium.....0.5%

1 SYRINGE (55ML) OF GASTRIC GEL PROVIDES ABOUT

11,000 mg of aloe vera, 9,000 mg of glutamine, 8,000 mg of scFOS and 6,000 mg of aluminium phosphate.

PROPERTIES

Aloe vera gel contains lectins which inhibit acid secretions of the stomach by acting directly on the parietal cells. The tannins, saponins and flavonoids which it contains may be responsible for its' protective action on the cells and the anti-inflammatory action on digestive mucosa. Finally aloe vera stimulates mucus production by the glandular cells and improves its' qualities.

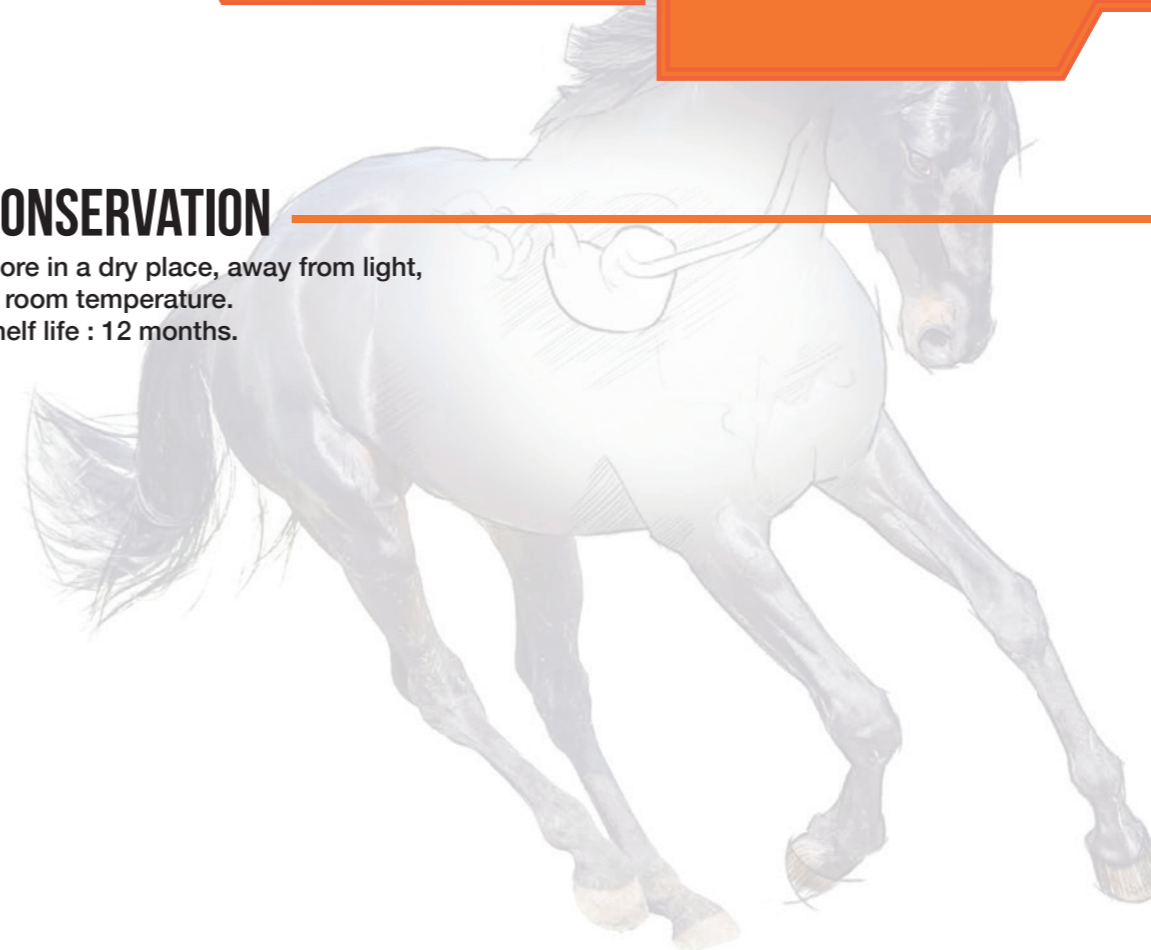
Aluminium phosphate has the ability to cover and line the gastric mucosa. It also has a cytoprotective role: stimulating the production of endogenous prostaglandins which favour the secretion of mucus and bicarbonates, increasing blood flow in the mucosa and decreasing acid secretion.

Glutamine represents an important energy source for fast renewing cells, such as those in the digestive tract. This amino-acid therefore participates in maintaining the integrity of the gastric mucosa and helping heal ulcerous lesions.

As prebiotics, the scFOS support and stabilise the beneficial intestinal flora in the stomach. They therefore contribute to limiting undesirable bacterial fermentations that produce lactic acid and gases, resulting in bloating.

CONSERVATION

Store in a dry place, away from light, at room temperature.
Shelf life : 12 months.



Conceived by our Research and Development department.
Manufactured in our laboratory.

Digestive system



OMEGA OIL

DESCRIPTION

A blend of linseed oil and non-GMO* maize germ oil (corn), non refined, first pressed, and of "human food" quality.

A source of essential fatty acids and natural antioxidants.

Permits a well thought out supply of Omega 3, 6 and 9, beneficial to health.

* <0.1%

INDICATIONS

Diversifies energy sources in the concentrate ration.

Increases the energy value of the ration.

Use of this product is of particular interest in the following situations:

- Lack of condition
- Pathological disorders related to, or aggravated by high cereals rations:
 - behavioural problems (nervousness),
 - muscular disorders (chronic myopathies such as "tying-up"),
 - gastric ulcers,
 - etc.

DIRECTIONS FOR USE

Adult horse (500 kg) :

Give 50 to 100 ml per meal. Mix well into the feed.

For ponies, administrate a daily dose in proportion to the animal's liveweight.

*Free from Naturally Occurring Prohibited Substances (NOPS) in accordance with the regulations of racing codes, FEI, FFE and SHF.



5 L

25 L



Liquid

COMPOSITION

First pressed linseed oil, non-GMO* virgin maize germ (corn germ) oil, natural tocopherols.

* <0.1%

ANALYTICAL CONSTITUENTS

| | |
|--------------------------------------|-------|
| Oils and Fats..... | 99.9% |
| of which: Saturated fatty acids..... | ≈ 11% |
| Unsaturated fatty acids..... | ≈ 87% |
| Omega 3 (Linolenic acid) | 34% |
| Omega 6 (Linoleic acid) | 31% |
| Omega 3 / Omega 6 ratio | = 1.1 |
| Omega 9 (Oleic acid)..... | 22% |

PROPERTIES

First pressed linseed oil is very rich in Omega 3 whilst the non-GMO*, virgin maize germ oil is an important source of Omega 6 and natural tocopherols (antioxidants).

This blend of non-refined vegetable oils, first pressed and of "human food" quality, is rich in essential fatty acids. It allows a well thought out supply of Omega 3, 6 and 9, beneficial to health.

Feeding oil permits a reduction in the glycaemic index of cereal based concentrate rations. Furthermore, it assists the intestinal transit and soothes inflamed mucous membranes in the upper digestive tract (oesophagus, stomach and small intestine).

CONSERVATION

Store in a dry place, away from light, at room temperature.

Shelf life : 12 months.

Use within 30 days after opening.



Conceived by our Research and Development department.
Manufactured in our laboratory.



BIOTIN

DESCRIPTION

A source of biotin, sulphur-containing amino acids, protected vitamins and chelated trace elements. Contributes to improving the quality and growth rate of the hoof wall and integuments.

INDICATIONS

Covers daily requirements in biotin, vitamins B5 and B6. REVERDY BIOTIN can be used at higher doses in the following situations:

- Poor quality brittle horn.
- Unshod work, frequent de-shoeing (trotting races).
- Damaged hair (coat / mane / tail).

DIRECTIONS FOR USE

Distribute with cereals or compound feeds. Mix well into the feed.
1 measure = 25 g

| ADULT HORSE (500 KG) | DAILY DOSE |
|--------------------------|--|
| Maintenance dose | 1 measure (25 g) equivalent to 5 g /100 kg (liveweight) |
| Maximum recommended dose | 2 measures (50 g) equivalent to 10 g /100 kg (liveweight) |

For ponies and youngstocks, administer a daily dose in proportion to the animal's liveweight.



1 kg 2.5 kg



Small pellets



*Free from Naturally Occurring Prohibited Substances (NOPS) in accordance with the regulations of racing codes, FEI, FFE and SHF.

COMPOSITION

Barley, MSM (Methylsulfonylmethane), extruded linseed, calcium carbonate.

ADDITIVES PER KG

Zinc (Hydrated amino acids chelate) 7,000 mg
Copper (Hydrated amino acids chelate) 1,500 mg
DL-Methionine 90,000 mg
Natural L-Cystine 30,000 mg
Vitamin A 1,000,000 IU
Vitamin B5 (Pantothenic acid) 3,000 mg
Vitamin B6 (Pyridoxine) 3,000 mg
Vitamin B8 (Biotin) 850 mg

ANALYTICAL CONSTITUENTS

Humidity 11%
Total protein 15%
Fats and oils 3%
Crude fiber 5%
Ash 7%
Calcium 0.45%
Phosphorus 0.25%
Sodium 0.1%

1 MEASURE (25G) OF REVERDY BIOTIN PROVIDES

21 mg of biotin (vitamin B8), 2,250 mg of DL-methionine, 1,250 mg of MSM, 750 mg of natural L-cystine, 175 mg of chelated* zinc and 38 mg of chelated* copper, 25,000 IU of vitamin A, 75 mg of vitamin B5 and 75 mg of vitamin B6.

*Amino acids chelate

CONSERVATION

Store in a dry place, away from light, at room temperature.
Shelf life : 18 months.

PROPERTIES

The sulphur-containing amino acids (methionine, cystine) are precursors of keratin, the constituent protein of hoof horn, the coat, the mane and the tail. This structural protein takes its rigidity from the sulphur atoms present in these precursor amino acids which link together with covalent bonds (disulphide bonds).

MSM also represents a source of organic sulphur.

The supply of easily assimilated chelated copper and above all chelated zinc ensures good keratinization and therefore healthy integuments.

At a dose of approximately 20 mg a day, biotin (vitamin B8) improves the growth rate and hardness of the hoof wall.

Vitamin B5 takes part in epithelium and integument renewal. It favours wound healing and hair growth.

Vitamin B6 intervenes in the metabolism of amino acid and proteins. Notably it participates in the synthesis of cysteine, sulphur containing amino acid precursor of cystine.

Vitamin A is involved in the synthesis of proteins and intervenes in the integrity and protection of the keratogenous epithelial.

PRECAUTIONS FOR USE

Due to the presence of high levels of vitamins and trace elements and furthermore, excess sulphur being harmful to keratin synthesis, respect the recommendations.

Musculoskeletal system



FLEXY LIQUID

DESCRIPTION

A preparation based on the three major chondroprotective agents (chondroitin, glucosamine and MSM) and hyaluronic acid. Contributes to relieving articular pains, slowing the evolution of arthritis and improving articular lubrication and cartilage elasticity.

INDICATIONS

Prevention of articular problems.

REVERDY FLEXY LIQUID can be used at higher doses in the following situations:

- Sudden/considerable articular stress:
 - breaking/pre-training, · competition period,
 - intensive training period, · work on hard ground.
- Articular pain/lameness due to arthritis in the aged horse.
- In compliment to articular surgery.

DIRECTIONS FOR USE

Distribute by mixing with cereals or the pelleted feed, or to be directly swallowed by administering into the mouth using a syringe. Shake well before use.

| ADULT HORSE (500 KG) | DAILY DOSE |
|--------------------------------------|--|
| Loading dose (1 st month) | 50 ml - equivalent to 10 ml /100 kg (liveweight) |
| Maintenance dose (or preventive) | 25 ml - equivalent to 5 ml /100 kg (liveweight) |
| Maximum recommended dose | 75 ml - equivalent to 15 ml /100 kg (liveweight) |

For ponies and youngstocks, administer a daily dose in proportion to the animal's liveweight.



Liquid



*Free from Naturally Occurring Prohibited Substances (NOPS) in accordance with the regulations of racing codes, FEI, FFE and SHF.

COMPOSITION

Demineralised water, glucosamine sulphate 2 KCl (marine origin), MSM (Methylsulfonylmethane), fructose, chondroitin sulphate (marine origin), hyaluronic acid, natural orange flavouring.

ANALYTICAL CONSTITUENTS

Humidity75%
 Total protein5.5%
 Ashs5.5%
 Sodium0.3%

50ML OF FLEXY LIQUID PROVIDE

10,000 mg of glucosamine sulphate 2KCl, 4,000 mg of MSM, 2,000 mg of marine chondroitin sulphate and 300 mg of hyaluronic acid.

PROPERTIES

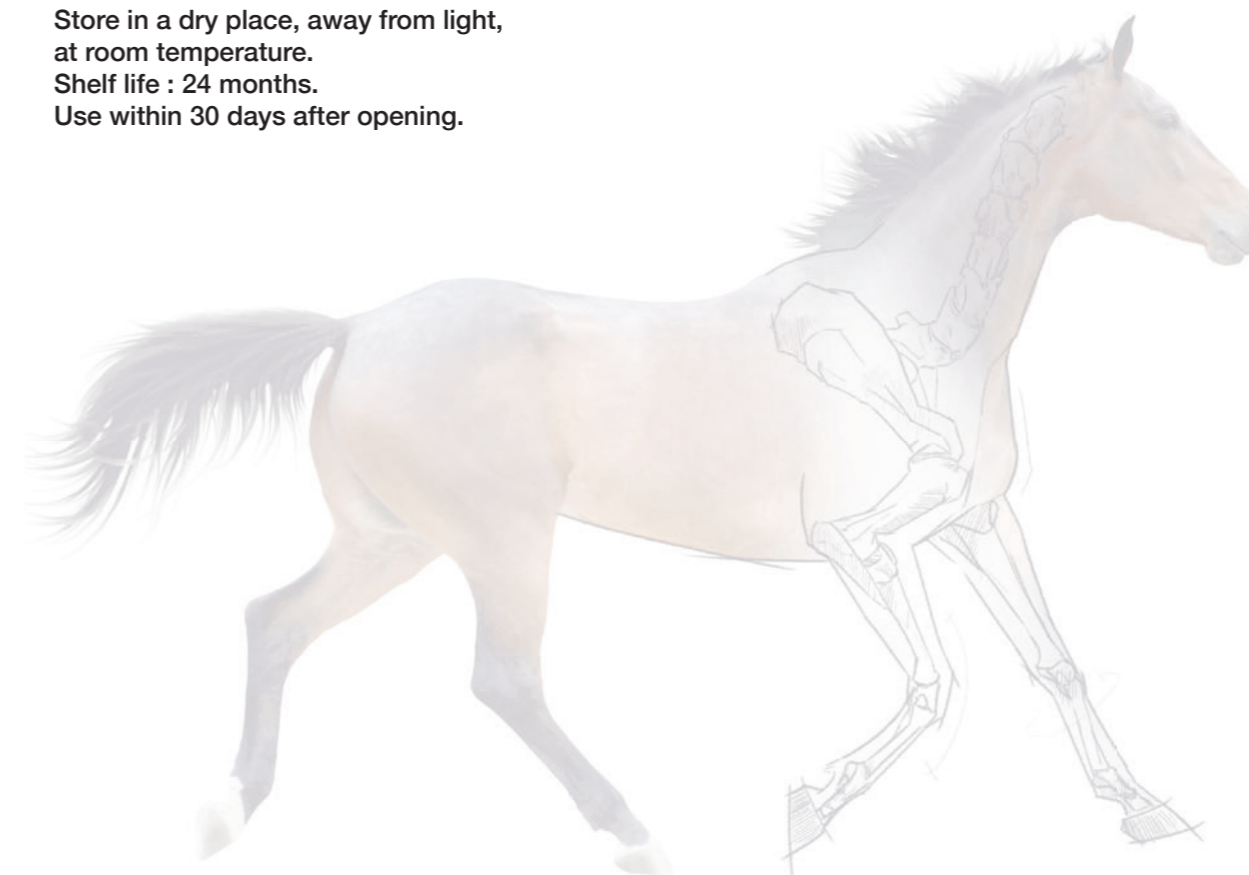
Chondroitin is a constituent of proteoglycans whose role are to maintain correct hydration of cartilage and bones. Furthermore, it directly protects cartilage cells from enzymatic reactions and free radicals.

Glucosamine is the precursor of many of the constituents of proteoglycans and of hyaluronic acid. In cartilage, hyaluronic acid is bound with proteoglycans and forms aggregates which assure good hydration of this tissue. In the synovial fluid of joints, hyaluronic acid has a role of lubricant and chondroprotective agents.

MSM also possesses chondroprotective properties. It is also a source of organic sulphur indispensable to the synthesis of collagen, an abundant cartilage protein, giving it hydration, resistance, elasticity and suppleness properties.

CONSERVATION

Store in a dry place, away from light, at room temperature.
 Shelf life : 24 months.
 Use within 30 days after opening.



Conceived by our Research and Development department.
 Manufactured in our laboratory.

Musculoskeletal system



FLEXY POWDER

DESCRIPTION

A preparation based on the three major chondroprotective agents (chondroitin, glucosamine and MSM) and hyaluronic acid. Contributes to relieving articular pains, slowing the evolution of arthritis and improving articular lubrication and cartilage elasticity.

INDICATIONS

Prevention of articular problems.

REVERDY FLEXY POWDER can be used at higher doses in the following situations:

- Sudden/considerable articular stress:
 - breaking/pre-training,
 - intensive training period,
 - competition period,
 - work on hard ground.
- Articular pain/lameness due to arthritis in the aged horse.
- In compliment to articular surgery.



1.8 kg



Powder



**Free from Naturally Occurring Prohibited Substances (NOPS) in accordance with the regulations of racing codes, FEI, FFE and SHF.*

DIRECTIONS FOR USE

Distribute by mixing with the cereal or pelleted feed. 1 measure = 50 g

| ADULT HORSE (500 KG) | DAILY DOSE |
|--------------------------------------|---|
| Loading dose (1 st month) | 1 measure (50 g) equivalent to 10 g /100 kg (liveweight) |
| Maintenance dose (or preventive) | 1/2 measure (25 g) equivalent to 5 g /100 kg (liveweight) |
| Maximal recommended dose | 1 1/2 measure (75 g) equivalent to 15 g /100 kg (liveweight) |

For ponies and youngstocks, administer a daily dose in proportion to the animal's liveweight.

COMPOSITION

Fructose, glucosamine sulphate 2KCl (marine origin), MSM (Methylsulfonylmethane), chondroitin sulphate (marine origin), hyaluronic acid, natural orange flavouring.

ANALYTICAL CONSTITUENTS

| | |
|--------------------|------|
| Humidity..... | 9% |
| Total protein..... | 6.5% |
| Fats and oils..... | 1% |
| Crude fiber..... | 0.4% |
| Ash..... | 8.5% |
| Sodium..... | 0.5% |

1 MEASURE OF FLEXY POWDER (50G) PROVIDES

10,000 mg of glucosamine sulphate 2KCl, 4,000 mg of MSM, 2,000 mg of chondroitin sulphate and 300 mg of hyaluronic acid.

PROPERTIES

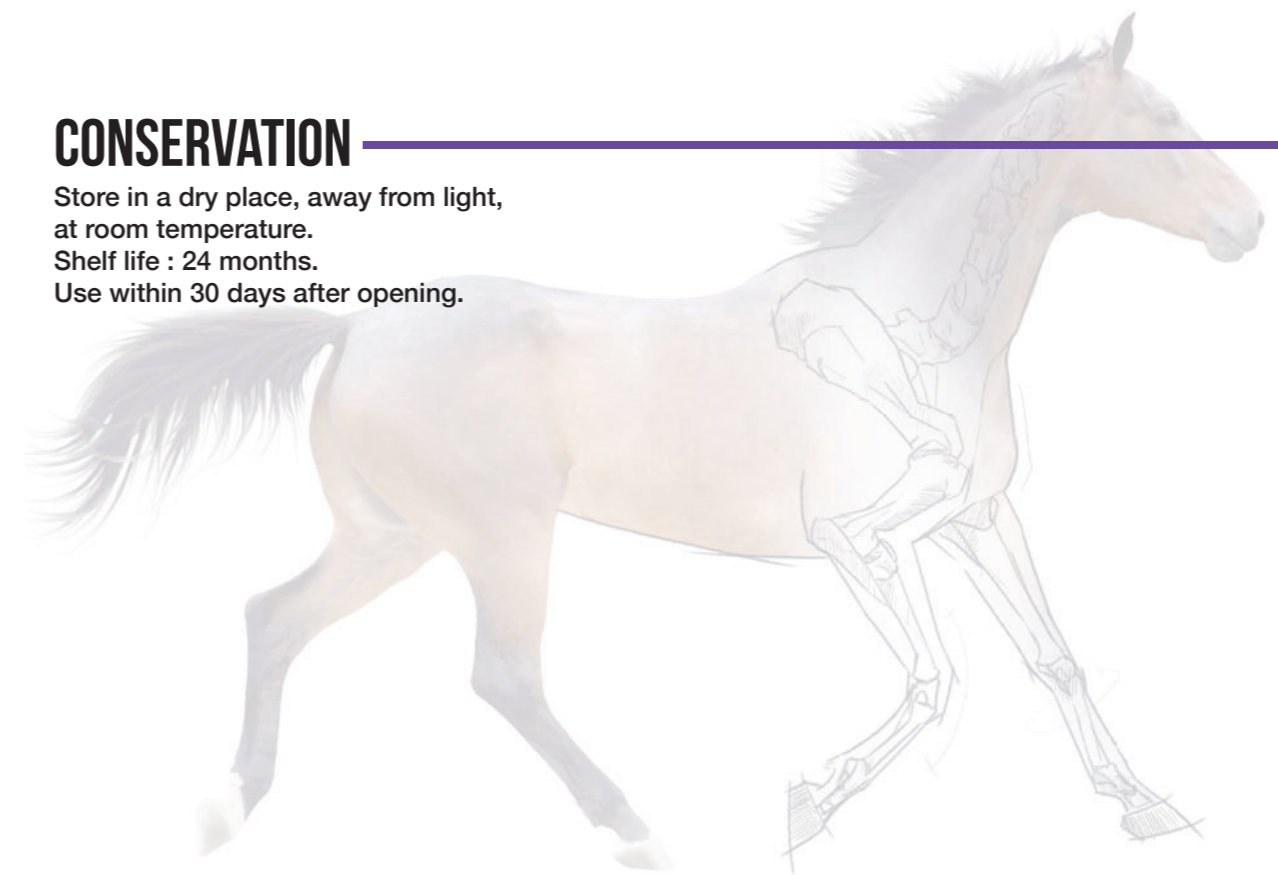
Chondroitin is a constituent of proteoglycans whose role are to maintain correct hydration of cartilage and bones. Furthermore, it directly protects cartilage cells from enzymatic reactions and free radicals.

Glucosamine is the precursor of many of the constituents of proteoglycans and of hyaluronic acid. In cartilage, hyaluronic acid is bound with proteoglycans and forms aggregates which assure good hydration of this tissue. In the synovial fluid of joints, hyaluronic acid has a role of lubricant and chondroprotective agents.

MSM also possesses chondroprotective properties. It is also a source of organic sulphur indispensable to the synthesis of collagen, an abundant cartilage protein, giving it hydration, resistance, elasticity and suppleness properties.

CONSERVATION

Store in a dry place, away from light, at room temperature.
Shelf life : 24 months.
Use within 30 days after opening.



Conceived by our Research and Development department.
Manufactured in our laboratory.



OSTEOFLEXY

DESCRIPTION

A source of minerals, trace elements, vitamins & chondroprotective agents. Contributes to improving bone mineralization and cartilage & bone renewal.

INDICATIONS

- Covers daily requirements in calcium, phosphorus, magnesium, zinc, manganese, copper, vitamins D3 and K3.
- Supports bone mineralization in young growing horses.
- Mineralization disorders, to help bone consolidation following a fracture.

DIRECTIONS FOR USE

Distribute with cereals or compound feed. Mix well into the feed.
1 measure = 35 g

| ADULT HORSES YOUNG GROWING HORSES (ADULT LIVWEIGHT = 500 KG) | DAILY DOSE |
|--|---|
| Maintenance dose | 2 measures (70 g) equivalent to 14 g /100 kg (liveweight) |
| Maximum recommended dose | 4 measures (140 g) equivalent to 28 g /100 kg (liveweight) |

For ponies, administer a daily dose in proportion to the animal's liveweight.



1.5 kg 3.5 kg 12.5 kg



Small pellets



*Free from Naturally Occurring Prohibited Substances (NOPS) in accordance with the regulations of racing codes, FEI, FFE and SHF.

COMPOSITION

Dicalcium phosphate, barley, lithothamnion, maize, extruded linseed, magnesium phosphate, glucosamine sulphate 2 KCl (marine origin), extruded soya beans, MSM (Methylsulfonylmethane), fructose.

ADDITIVES PER KG

Zinc (Hydrated amino acids chelate).....2,571 mg
Manganese (Amino acids chelate).....1,429 mg
Copper (Hydrated amino acids chelate)....900 mg
Vitamin D3.....35,714 IU
Vitamin K3.....86 mg

ANALYTICAL CONSTITUENTS

Humidity.....10%
Total protein.....9%
Fats and oils.....1%
Crude fiber.....4%
Ash.....44%
Calcium.....10.7%
Phosphorus.....5.4%
Magnesium.....2.5%
Sodium.....1%

2 MEASURES OF OSTEOFLEXY (70G) PROVIDE

7,500 mg of calcium, 5,000 mg of glucosamine (sulphate 2 KCl), 3,750 mg of phosphorus, 2,500 mg of MSM, 1,750 mg of magnesium, 180 mg of chelated zinc*, 100 mg of chelated manganese*, 63 mg of chelated copper*, 2,500 IU of vitamin D3 and 6 mg of vitamin K3.

* Amino acids chelates

PRECAUTIONS FOR USE

Due to the presence of high levels of vitamins and trace elements, respect the recommendations.

CONSERVATION

Store in a dry place, away from light, at room temperature.
Shelf life : 18 months.
Use within 30 days after opening.

PROPERTIES

Calcium, phosphorus and magnesium are vital minerals for bone mineralization. Calcium of marine origin is better assimilated than calcium provided by limestone. Lithothamnion has been shown to increase bone renewal and mineralization after 112 days compared to calcium carbonate from limestone.

Glucosamine is the precursor of many of the constituents of proteoglycans and of hyaluronic acid. In cartilage, hyaluronic acid is bound with proteoglycans and form aggregates which gives it good hydration of this tissue. In the synovial fluid joints, hyaluronic acid has a role of lubricant and chondroprotective agent. It has been shown glucosamine supplementation decreased inflammation while supporting the growth of new cartilage in response to joint trauma in young growing horses when glucosamine was administered for 84 days prior to the injury in question.

MSM also possesses chondroprotective properties. It is a source of organic sulphur which is indispensable to the synthesis of collagen, an abundant protein in cartilage and which gives it hydration, resistance, elasticity and suppleness.

Zinc, manganese and copper are provided in an easily absorbed amino acid chelates form. These trace elements are associated with a number of enzymes which play important roles within the body in the formation of bone and cartilage.

Vitamin D3 participates in bone mineralization, playing a part in regulating the balance between phosphorus and calcium.

In horses, menadione (vitamin K3) has been demonstrated to be the only patented vitamin K that increases the plasma concentration of menaquinone-4, the most effective vitamin K form regulating bone metabolism. Vitamin K contributes to increasing bone volume and strength by stimulating bone formation and reducing bone resorption.



SUPER FLEXY

DESCRIPTION

A preparation based on the three major chondroprotective agents (chondroitin, glucosamine and MSM), hyaluronic acid and extracts of avocado and soya oils.

Contributes to relieving articular pains, slowing the evolution of arthritis and improving articular lubrication and cartilage elasticity.

INDICATIONS

- Proven joint problems.
- Articular pain/lameness due to arthritis.
- In complement to articular surgery.
- Sudden/considerable articular stress:
 - › breaking/pre-training,
 - › competition period,
 - › periods of intensive training,
 - › work on hard ground.

DIRECTIONS FOR USE

Feed by mixing with the cereal or pelleted feed.
1 measure = 50 g

| ADULT HORSE (500 KG) | DAILY DOSE |
|--------------------------------------|---|
| Loading dose (1 st month) | 1 measure (50 g) equivalent to 10 g /100 kg (liveweight) |
| Maintenance dose (or preventive) | ½ measure (25 g) equivalent to 5 g /100 kg (liveweight) |
| Maximal recommended dose | 1 ½ measure (75 g) equivalent to 15 g /100 kg (liveweight) |

For ponies and youngstocks, administer a daily dose in proportion to the animal's liveweight.



1.8 kg



Powder



*Free from Naturally Occurring Prohibited Substances (NOPS) in accordance with the regulations of racing codes, FEI, FFE and SHF.

COMPOSITION

Fructose, glucosamine sulphate 2 KCl (marine origin), avocado and soya unsaponifiable fractions, MSM (Methylsulfonylmethane), chondroitin sulphate (marine origin), hyaluronic acid, natural orange flavouring.

ANALYTICAL CONSTITUENTS

Humidity.....11%
Total protein9.5%
Fats and oils8.5%
Ash7.5%
Sodium.....0.3%

1 MEASURE OF SUPER FLEXY (50G) PROVIDES

10,000 mg of glucosamine sulphate 2 KCl, 6,000 mg of avocado and soya extracts, 4,000 mg of MSM, 2,000 mg of chondroitin sulphate and 300 mg of hyaluronic acid.

PROPERTIES

Avocado and soya unsaponifiable fractions improve healing of articular lesions localised at a synovial membrane and cartilage tissue level. They also permit an increase in the synthesis of glycosaminoglycans (constituents of proteoglycans) within articular cartilage.

Chondroitin is a constituent of proteoglycans whose role are to maintain correct hydration of cartilage and bones. Furthermore, it directly protects cartilage cells from enzymatic reactions and free radicals.

Glucosamine is the precursor of many of the constituents of proteoglycans and of hyaluronic acid. In cartilage, hyaluronic acid is bound with proteoglycans and forms aggregates which assure good hydration of this tissue. In the synovial fluid of joints, hyaluronic acid has a role of lubricant and chondroprotective agent.

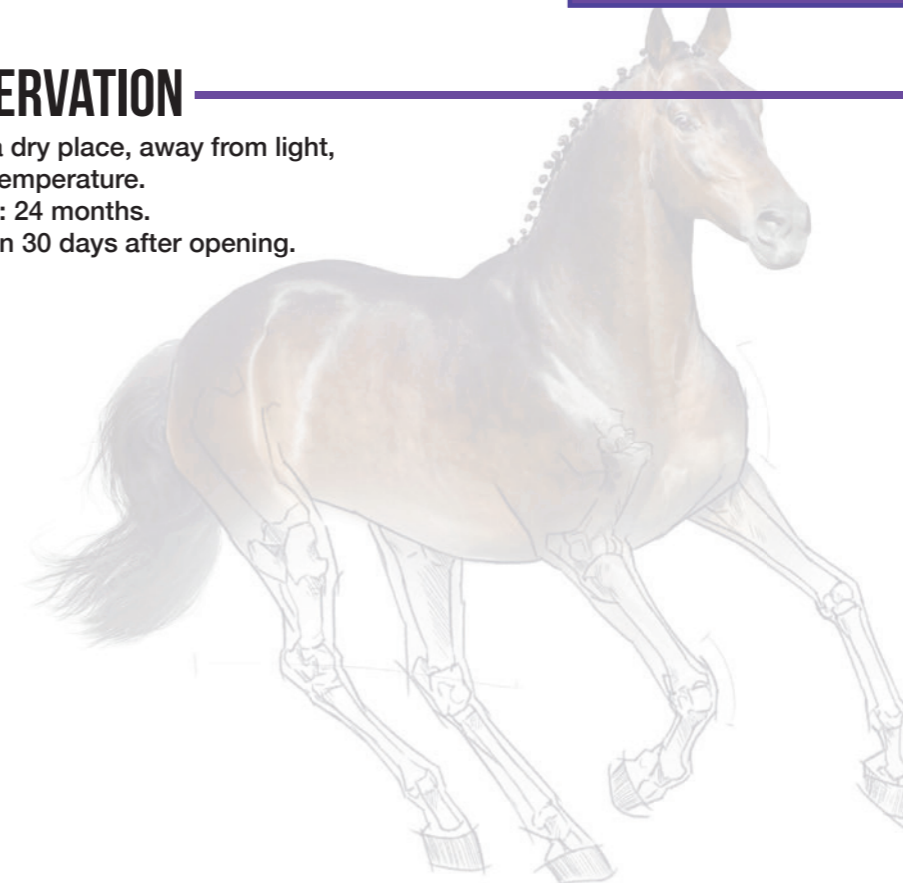
MSM also possesses chondroprotective properties. It is a source of organic sulphur which is indispensable to the synthesis of collagen, an abundant protein in cartilage and which gives it hydration, resistance, elasticity and suppleness.

CONSERVATION

Store in a dry place, away from light, at room temperature.

Shelf life : 24 months.

Use within 30 days after opening.



 **Laboratoire Vétérinaire**
REVERDY



Preface

The story of Reverdy started in 1987 at the stud of the same name located a few kilometres from the Mont-Saint-Michel... The Haras du Reverdy Stud breeds top level sport horses and feeding their horses properly was becoming a real concern. Thus the Sartilly Industries company came into being on the 11th of July 2000.

Driven by the passion for horses, and equally by continuously seeking excellence, the company rapidly invested the building of a factory with the aim of manufacturing their own feeds under the name of Reverdy Nutrition Équine. The company's philosophy has always been to offer outstanding products, based on the selection of noble raw ingredients appropriate to the horse.

In 2013, following this logic, Reverdy created a Laboratory within which the premixes, vitamins and minerals, and the nutritional supplements are produced. The construction of this new unit allowed the company to acquire greater autonomy as well as have complete control over the production line, from buying raw ingredients to the commercialisation of the finished products.

Everything we sell, we manufacture it!

At the cutting edge of research and always seeking innovation, the Haras du Reverdy became in 2019 a private research centre dedicated to equine nutrition. A first in France, indeed in Europe! The nutritional supplements conceived by our vets are now scientifically tested and validated.

All the vitamin and mineral supplements and nutritional supplements made in our Veterinary Laboratory Reverdy are presented in this brochure. Given in addition to a daily balanced ration, our products allow you to fulfil your horse's specific requirements.

For any information or advice, don't hesitate to contact us by telephone 00 33 (0)2 33 91 35 60 or by email (contact@reverdy.fr).

Happy reading!

